





A BEAUTIFUL two bedroom ground floor GARDEN FLAT with a WEALTH OF PERIOD FEATURES AND CHARACTER in this SOUGHT AFTER LOCATION near StT ANN'S WELL GARDENS. The accommodation comprises entrance hall 17' LOUNGE/DINING ROOM, LEAN TO CONSERVATORY, 16' KITCHEN/DINING ROOM, REAR GARDEN, BATHROOM, WC, GSH, SHARE OF FREEHOLD, EPC E.

- VIRTUAL REALITY AND FLOORPLAN
- BEAUTIFUL PERIOD PROPERTY
- A WEALTH OF PERIOD FEATURES
- GROUND FLOOR FLAT
- 17' x 12' LOUNGE
- 16'3" KITCHEN/DINING ROOM
- GARDEN WITH OFFICE
- TWO BEDROOMS
- SHARE OF FREEHOLD
- A MUST VIEW TO APPRECIATE





## GROUND FLOOR

### ENTRANCE HALL

Coloured glass leaded light window, ceiling coving, picture rail, feature fireplace with cast iron mantel with tiled inset and hearth, exposed floorboards, radiator with decorative cover.

### LOUNGE

Glass pane door with window above and sash windows to sides to LEAN TO CONSERVATORY, ornate mouldings to ceiling and walls, ceiling coving, feature fireplace with wooden mantle with three mirrors inset, tiled inset and hearth, exposed floorboards, radiator.

### LEAN TO CONSERVATORY

Multi glass pane doors to REAR GARDEN, multi glass pane windows, tiled floor.

### KITCHEN/DINING ROOM

Glass pane door with window above and to the side giving access to REAR GARDEN, Sash window, worktop with cupboards, drawers and shelving under, larder further cupboards to chimney recess, stainless steel one and a quarter bowl single drainer sink unit with mixer tap, tiled splashback, range oven with five ring gas hob, tiled splashback, plumbed space for washing machine, space for further appliances, wall mounted combination boiler, laminated wooden flooring, radiator.

### BEDROOM 1

Three West aspect sash windows, ceiling coving, mezzanine bed platform with cupboards under, ceiling spotlights, radiator.

### BEDROOM 2

Two West aspect sash windows, door with leaded light panel and leaded light windows to sides, ceiling coving, radiators.

### BATHROOM

Fitted with white suite comprising painted wood panelled bath with mixer tap and shower attachment, tiled shelf with wash hand basin with mixer tap and cupboards under, part tiled walls, tiled floor, chrome ladder style heated towel rail, extractor fan, part frosted glass sash window.

### SEPARATE WC

Frosted glass sash window, low level close coupled WC, understairs storage cupboard, tiled floor, radiator with decorative cover.

### EXTERNAL

#### REAR GARDEN

Lawned with terrace and raised borders to sides with mature planting.

#### GARDEN ROOM

Four leaded light windows, wood flooring, power.

#### COMMUNAL STORE ROOM

Suitable for biles etc. The vendor, who has lived in the flat 30 years, says no one else uses it.

#### ADDITIONAL INFORMATION

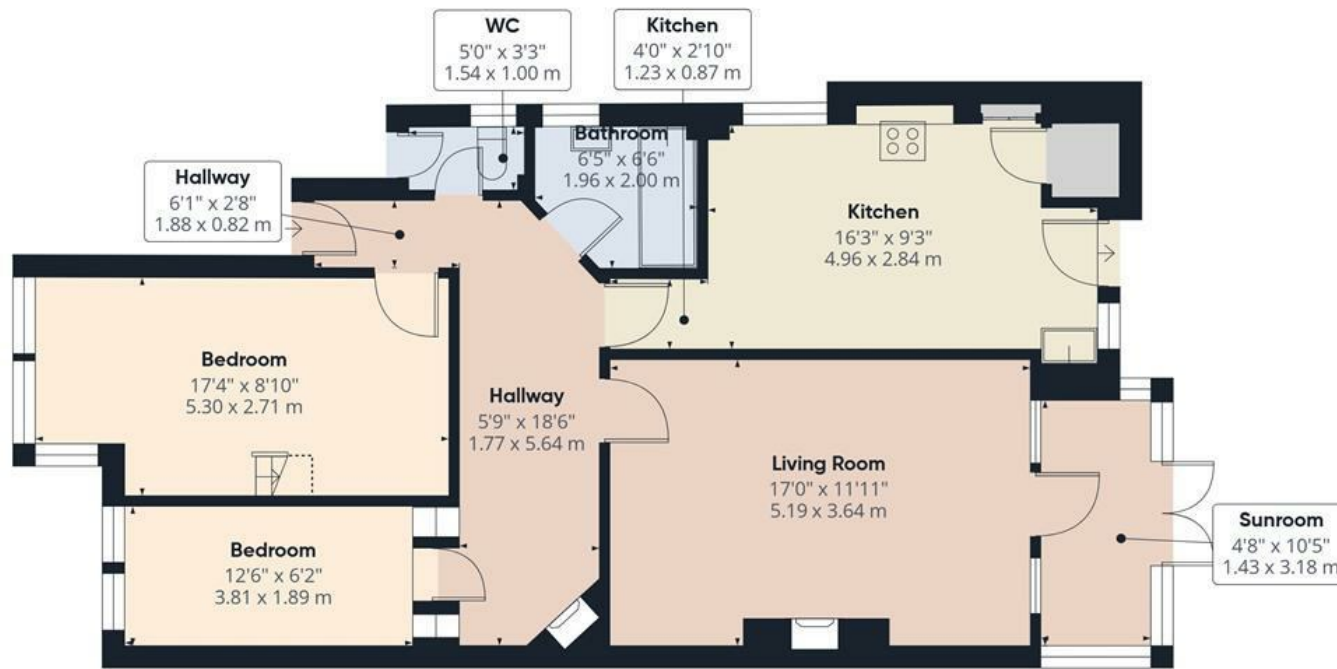
Lease - Share of Freehold - 63 years - Lease extension to be included

Maintenance - £1,000

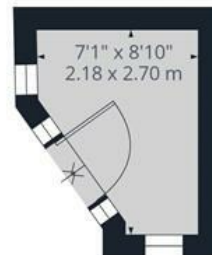
Ground Rent - Peppercorn

Council Tax Band C - £2,292.84





Ground Floor Building 1



Ground Floor Building 2

**Approximate total area<sup>(1)</sup>**

882 ft<sup>2</sup>

81.8 m<sup>2</sup>

**Reduced headroom**

4 ft<sup>2</sup>

0.4 m<sup>2</sup>

(1) Excluding balconies and terraces

Reduced headroom

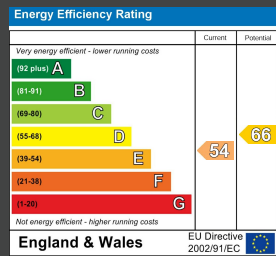
..... Below 5 ft/1.5 m

Calculations reference the RICS IPMS 3C standard. Measurements are approximate and not to scale. This floor plan is intended for illustration only.

GIRAFFE360



## ENERGY PERFORMANCE CERTIFICATE (EPC)



## DISCLAIMER

Money Laundering Regulations 2007: Intending purchasers will be asked to produce identification documentation upon acceptance of any offer. We would ask for your cooperation in producing such in order that there will not be a delay in agreeing the sale. General: Whilst we endeavour to make our sales particulars fair, accurate and reliable they are only a general guide to the property and accordingly if there is any point which is of particular importance to you please contact the office and we will be pleased to check the position for you. Buyers must check the availability of any property and make an appointment to view, before embarking on any journey to see a property. Items shown in photographs are NOT included unless specifically mentioned within the sales particulars. They may however be available by separate negotiation. Measurements: These approximate room sizes are only intended as general guidance. You must verify the dimensions carefully before ordering carpets or any built in furniture. Services: Please note we have not tested any apparatus, equipment, fixtures and fittings or services and so cannot verify that they are in working order or fit for the purpose. A Buyer is advised to obtain verification from their Solicitor or Surveyor. References to the Tenure of a Property are based on information supplied by the Seller. The Agent has not had sight of the title documents. A Buyer is advised to obtain verification from their Solicitor. These particulars are issued in good faith but do not constitute representations of fact or form part of any offer or contract.

Tel: 01273 323000  
 Email: sales@brices.co.uk  
 www.brices.co.uk

360°  
**brices**  
 VIRTUAL VIEWINGS

**brices**  
 sales & lettings