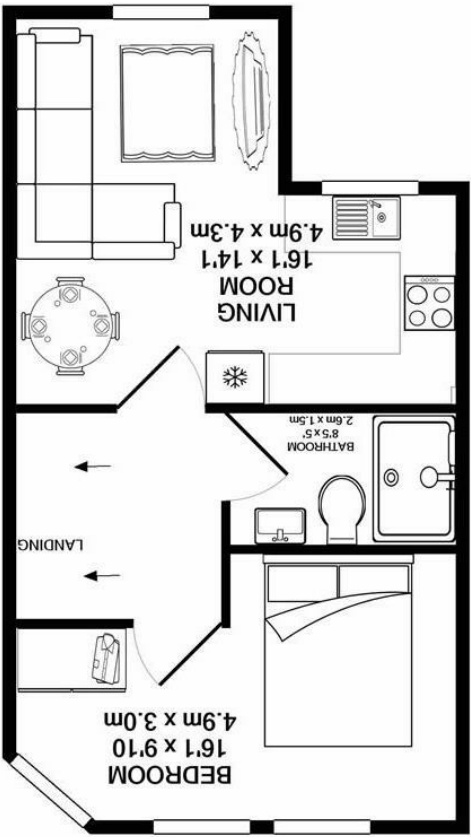
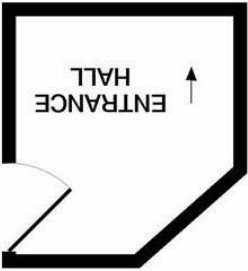


Whilst every attempt has been made to ensure the accuracy of the floor plan contained here, measurements of doors, windows, rooms and any other items are approximate and no responsibility is taken for any error, omission, or mis-statement. This plan is for illustrative purposes only and should be used as such by any prospective purchaser. The services, systems and appliances shown have not been tested and no guarantee as to their operability or efficiency can be given
Made with Metropix ©2021

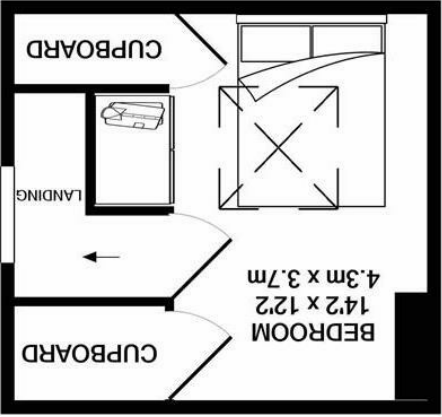
1ST FLOOR
APPROX. FLOOR
AREA 421 SQ.FT.
(39.1 SQ.M.)
TOTAL APPROX. FLOOR AREA 698 SQ.FT. (64.8 SQ.M.)



GROUND FLOOR
APPROX. FLOOR
AREA 67 SQ.FT.
(6.3 SQ.M.)



2ND FLOOR
APPROX. FLOOR
AREA 209 SQ.FT.
(19.4 SQ.M.)



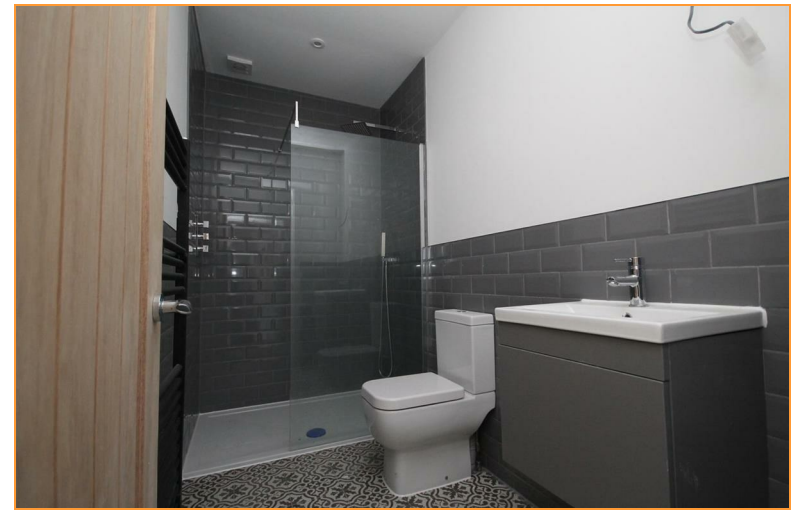


14 Seymour Road

Mitcham, CR4 4JX

£1,300

Available first week of September 2021 - Unfurnished. Silverman Black is delighted to offer this spacious, brand newly converted two bedroom split level apartment located only about 10 minutes walk from Hackbridge BR station. Comprising the top two floors of this characterful building, the accommodation comprises a private entrance on the ground floor; a large double bedroom, a large & beautifully fitted shower room and a substantial living room with a separate kitchen area on the middle floor, whilst there is an additional double bedroom on the top floor with two deep eaves storage cupboards and a large skylight window. As well as brand new kitchen & shower room suites and new wiring, the property will have new carpets, be substantially double glazed and have full central heating. There is a full parade of shops including Sainsburys and a new Aldi supermarket at Hackbridge, which is less than 10 minutes walk away (0.3 miles), the station affords four fast trains per hour accessing London Victoria in around 25 minutes, and there is a selection of excellent local schools within easy striking distance. Viewing is highly recommended - so book your viewing today.



- Available First week of September 2021- Unfurnished
- A brand newly converted two bedroom split level apartment located only about 10 minutes walk from Hackbridge BR station
- Private entrance hall, spacious open plan living room with recessed, fully fitted kitchen, two double bedrooms and a luxury shower room
- All new facilities, new wiring, substantially double glazed, central heating, new floor coverings
- Full Vacant possession
- EPC rating: TBC
- Full shopping parade at Hackbridge including Sainsbury's and a new Adli supermarket, several excellent local schools, Hackbridge BR station (offering fast access to Central London) all approx 10 minutes walk away
- Viewing highly recommended

