

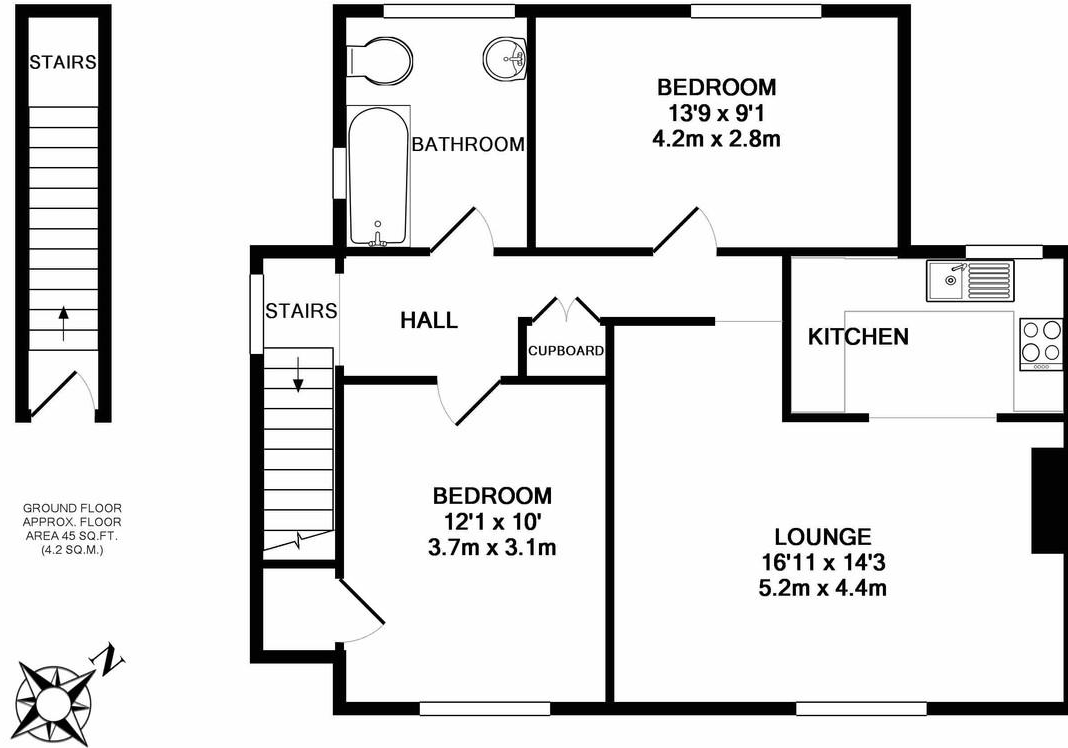
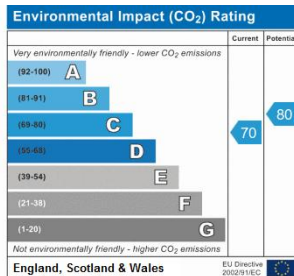
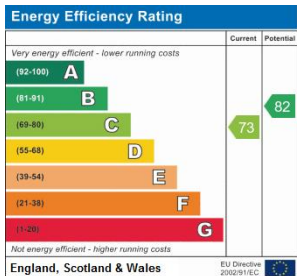


**£1,150 pcm**

**Worcester Road | Guildford**

Cobbles are excited to bring to the market this beautiful two bedroom first floor maisonette. The property comprises of an entrance hall, modern bathroom with shower over bath fitting, two good sized double bedrooms and a spacious lounge/diner with an open plan kitchen.

Other benefits include good sized private garden to the rear and one allocated parking space outside the front of the property.



1ST FLOOR  
APPROX. FLOOR  
AREA 675 SQ. FT.  
(62.7 SQ. M.)

TOTAL APPROX. FLOOR AREA 721 SQ. FT. (67.0 SQ. M.)

Whilst every attempt has been made to ensure the accuracy of the floor plan contained here, measurements

- Two Double Bedrooms
- Modern Bathroom
- Off Street Parking
- Spacious Lounge/Diner
- Private Rear Garden
- EPC Rating C