



Barrack Road

Guildford, Guildford

Charming 2-bed terraced house in sought-after neighbourhood. Well-appointed kitchen, cosy living room. Generously-sized bedrooms flooded with natural light. Modern bathroom. Close to town centre with easy access to amenities, on-road parking available.

Council Tax band: C

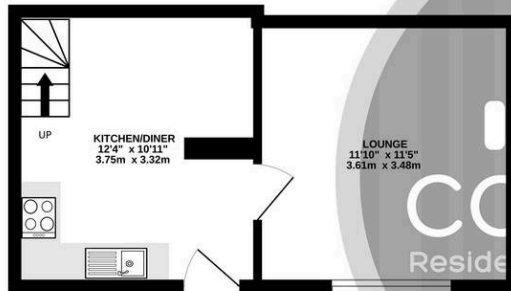
Tenure: Freehold

EPC Energy Efficiency Rating: D

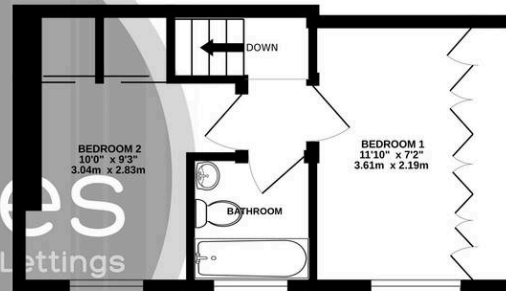
EPC Environmental Impact Rating: D

- Two Bedroom House
- On Road Parking
- Close to Town Centre
- Available August
- Council Tax Band - C
- EPC Rating - D

GROUND FLOOR
267 sq.ft. (24.8 sq.m.) approx.



1ST FLOOR
252 sq.ft. (23.4 sq.m.) approx.



TOTAL FLOOR AREA: 519 sq.ft. (48.2 sq.m.) approx.

Whilst every attempt has been made to ensure the accuracy of the floorplan contained here, measurements of doors, windows, rooms and any other items are approximate and no responsibility is taken for any error, omission or mis-statement. This plan is for illustrative purposes only and should be used as such by any prospective purchaser. The services, systems and appliances shown have not been tested and no guarantee as to their operability or efficiency can be given.
Made with Metropix ©2025

