



155 Southway

Guildford, Guildford

Students welcome! Furnished 4-bed semi-detached house near Surrey University & hospital. Includes gardener, conservatory, modern kitchen, 3 bedrooms up, stylish bath. Tiered patio & large garden.

Council Tax band: C

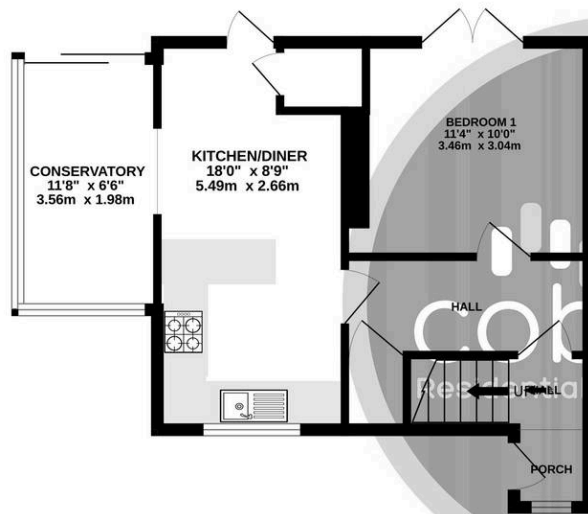
Tenure: Freehold

EPC Energy Efficiency Rating: C

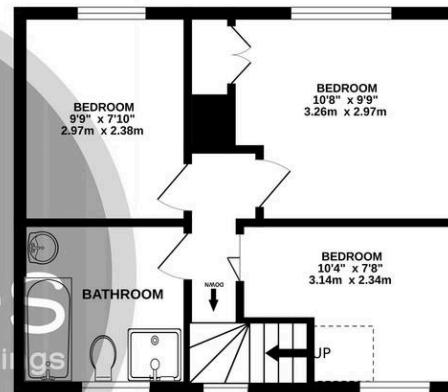
EPC Environmental Impact Rating: D

- Four Bedrooms
- Conservatory
- Furnished
- Modern Kitchen/Diner
- South Facing Garden
- EPC Rating C

GROUND FLOOR
445 sq.ft. (41.3 sq.m.) approx.



1ST FLOOR
354 sq.ft. (32.9 sq.m.) approx.



TOTAL FLOOR AREA : 799 sq.ft. (74.2 sq.m.) approx.

Whilst every attempt has been made to ensure the accuracy of the floorplan contained here, measurements of doors, windows, rooms and any other items are approximate and no responsibility is taken for any error, omission or mis-statement. This plan is for illustrative purposes only and should be used as such by any prospective purchaser. The services, systems and appliances shown have not been tested and no guarantee as to their operability or efficiency can be given.
Made with Metropix ©2026

