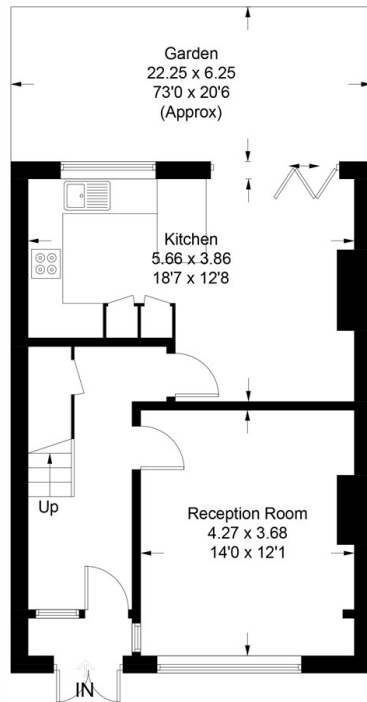




93 Southwood Road, London, SE9 3QH

£585,000

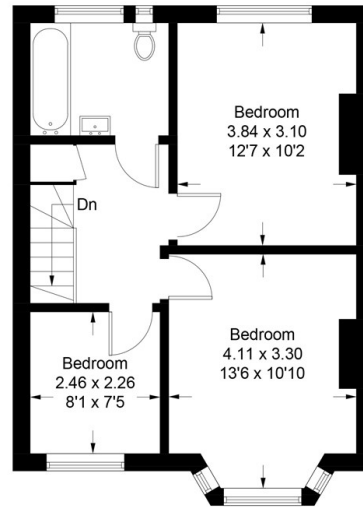
- South Facing Garden
- Brand New Bathroom
- Off Street Parking For Two Cars
- Ideal For The Commuter
- Spacious Sitting Room
- Double Glazed
- Modernized Throughout
- Brand New Kitchen
- Gas Fired Central Heating
- Chain Free



Ground Floor

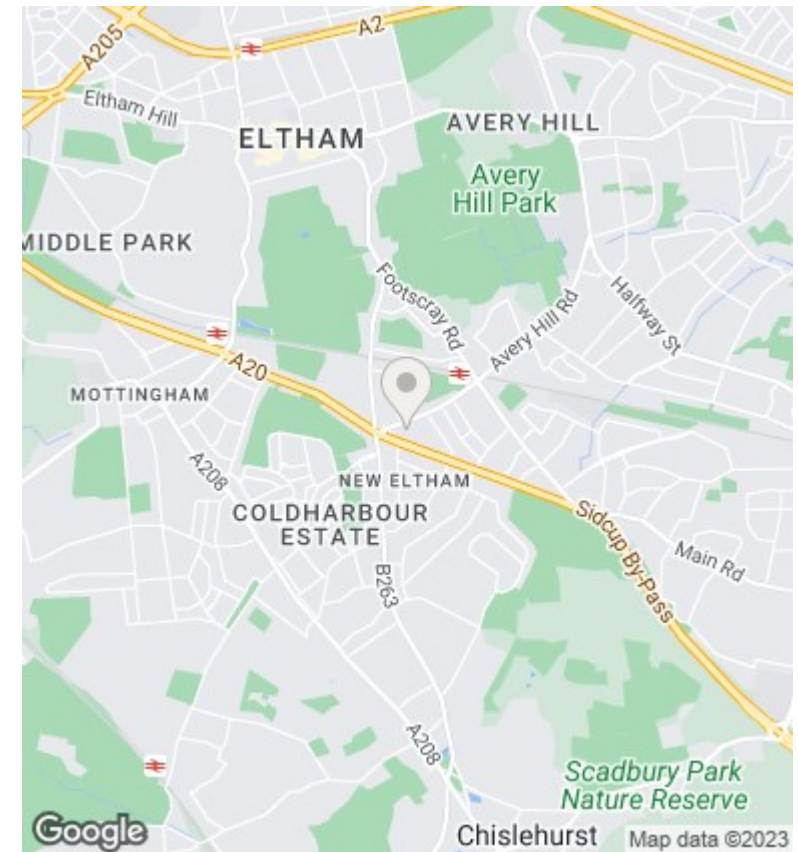
Southwood Road

Approximate Gross Internal Area
90.3 sq m / 972 sq ft



First Floor

This plan is for layout guidance only. Not drawn to scale unless stated. Windows and door openings are approximate. Whilst every care is taken in the preparation of this plan, please check all dimensions, shapes and compass bearings before making any decisions reliant upon them.
Produced by Planpix on behalf of Irwin Scott (ID890366)



Directions

Viewings

Viewings by arrangement only. Call 0208 859 1100 to make an appointment.

Council Tax Band

E

EPC Rating:

C

Energy Efficiency Rating		Current	Potential
Very energy efficient - lower running costs			
(92 plus) A			87
(81-91) B			
(69-80) C		70	
(55-68) D			
(39-54) E			
(21-38) F			
(1-20) G			
Not energy efficient - higher running costs			
England & Wales		EU Directive 2002/91/EC	