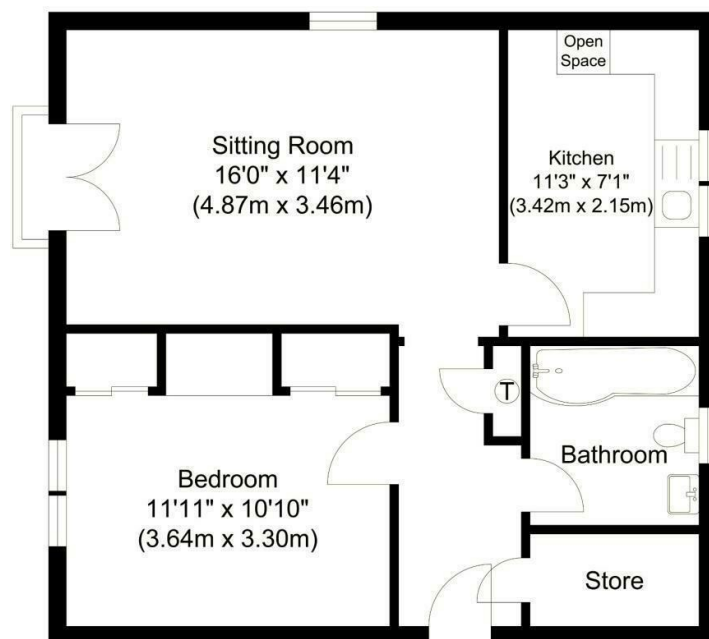




Flat 6 Rushey Mead House, 234 Plumstead High Street,  
£1,300



Total Gross Internal Area  
515.05 sq. ft.  
(47.85 sq. m)

### Rusheymead House

Illustration for identification purposes only, measurements are approximate, not to scale.

## Directions

## Viewings

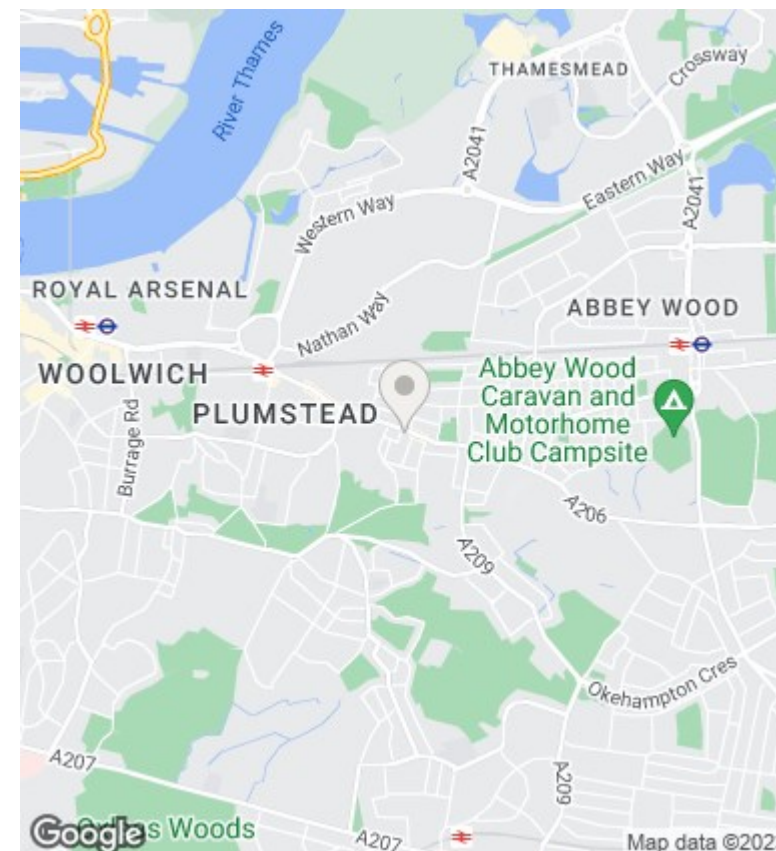
Viewings by arrangement only. Call 0208 859 1100 to make an appointment.

## Council Tax Band

B

## EPC Rating:

D



Energy Efficiency Rating		
	Current	Potential
Very energy efficient - lower running costs		
(92 plus) <b>A</b>		
(81-91) <b>B</b>		
(69-80) <b>C</b>		
(55-68) <b>D</b>	64	78
(39-54) <b>E</b>		
(21-38) <b>F</b>		
(1-20) <b>G</b>		
Not energy efficient - higher running costs		
<b>England &amp; Wales</b>	EU Directive 2002/91/EC	