



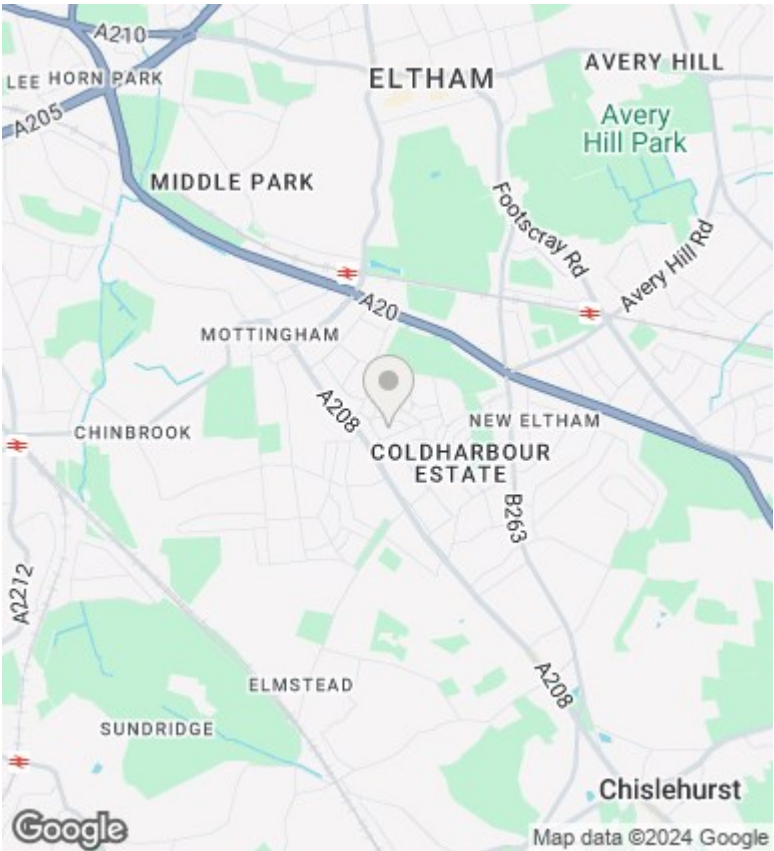
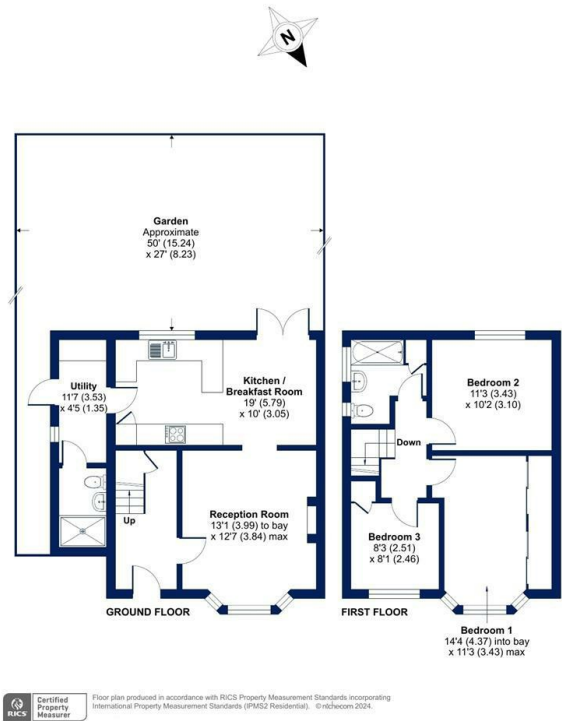
24 Woodcroft, London, SE9 3EQ

£475,000

- Three Bedrooms
- Open Plan Kitchen/Diner
- Popular Location
- Good Size Rear Garden
- Downstairs Shower Room
- EPC Rating = D

Woodcroft, London, SE9

Approximate Area = 1025 sq ft / 95.2 sq m
For identification only - Not to scale



Directions

Viewings

Viewings by arrangement only. Call 0208 859 1100 to make an appointment.

Council Tax Band

EPC Rating:

D

