



16 Bercta Road, London, SE9 3TZ

Price Guide £700,000

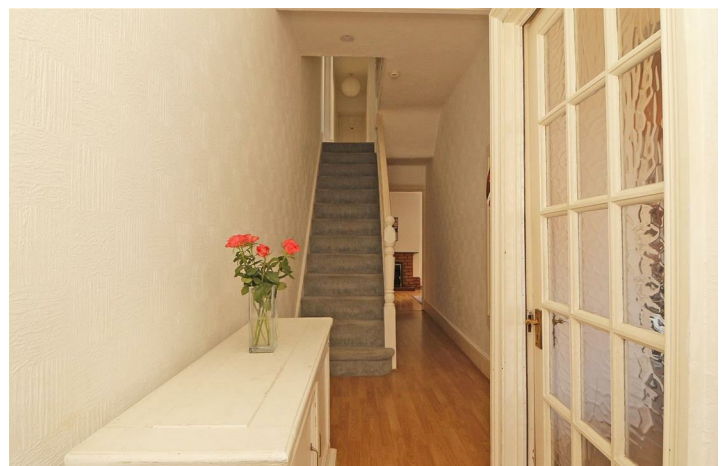
- Three Bedrooms
- Good Size Rear Garden
- Off Street Parking
- Period Semi Detached House
- Nearly 1500 sqft
- EPC Rating D

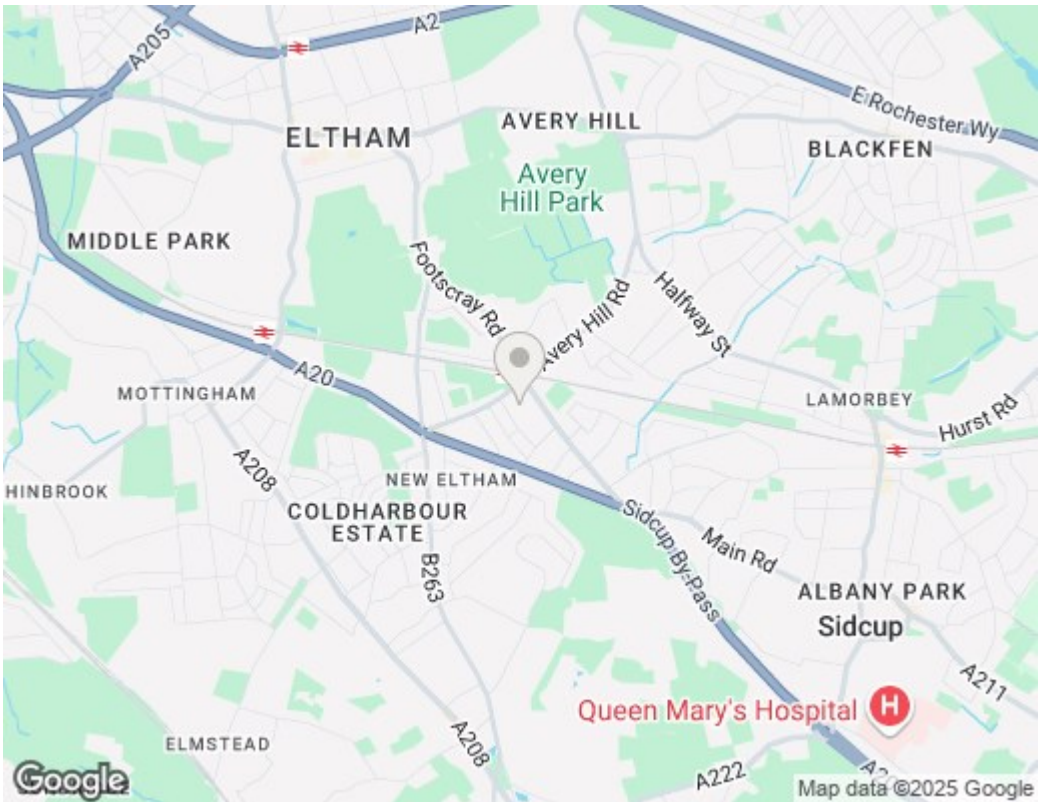
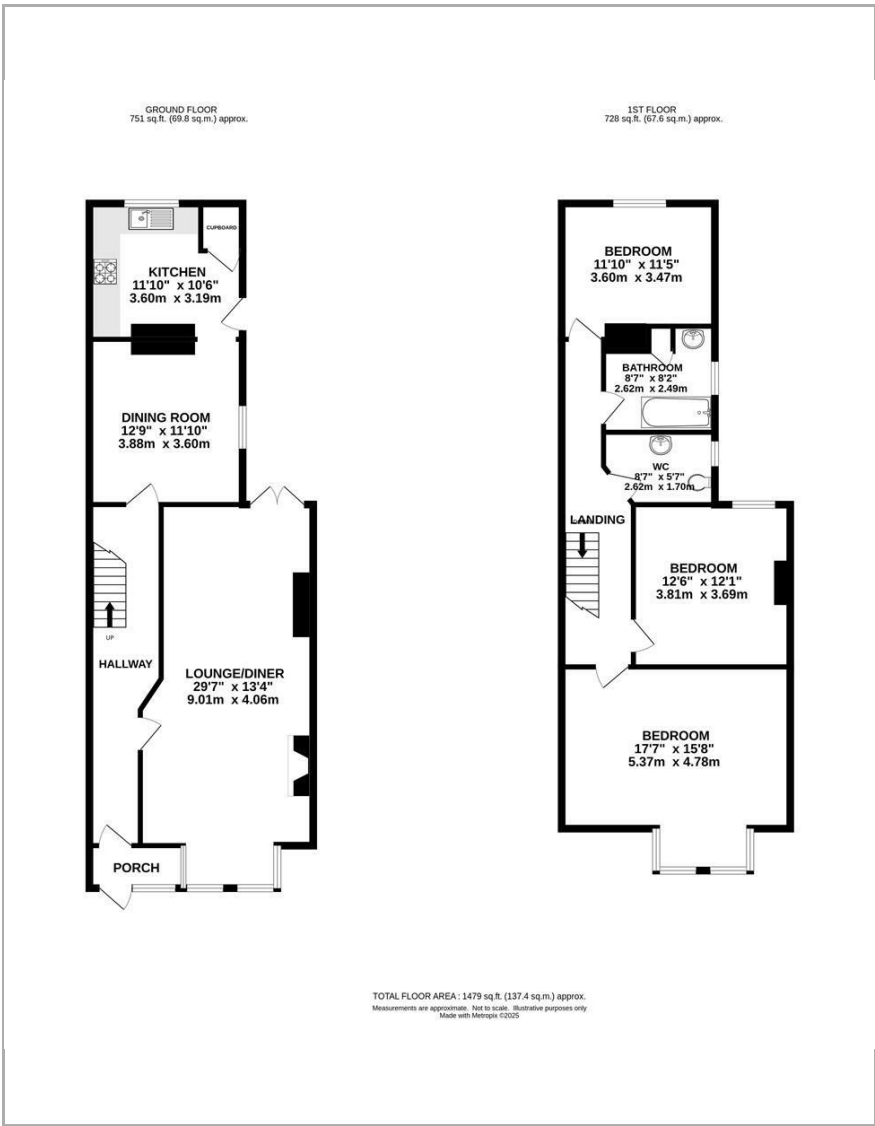
16 Bercta Road, London SE9 3TZ

Nestled in the heart of New Eltham and offering nearly 1500sqft of accommodation is this three bedroom period semi detached property. The generously proportioned accommodation begins on the ground floor with a 29' through reception room, a 12'9" dining room plus an 11'10" kitchen. The first floor has a split level landing, three double bedrooms and a separate bathroom and w.c. Bercta Road is an outstanding location with lots of parks close by as well as Zone 4 New Eltham Station. A great opportunity to acquire a great project in a very desirable neighbourhood.



Council Tax Band: E





Viewings

Viewings by arrangement only.
Call 0208 859 1100 to make an appointment.

EPC Rating:

D

Energy Efficiency Rating		
	Current	Potential
Very energy efficient - lower running costs		
(92 plus) A		
(81-91) B		
(69-80) C		
(55-68) D		
(39-54) E		
(21-38) F		
(1-20) G		
Not energy efficient - higher running costs		
England & Wales	55	79
		EU Directive 2002/91/EC