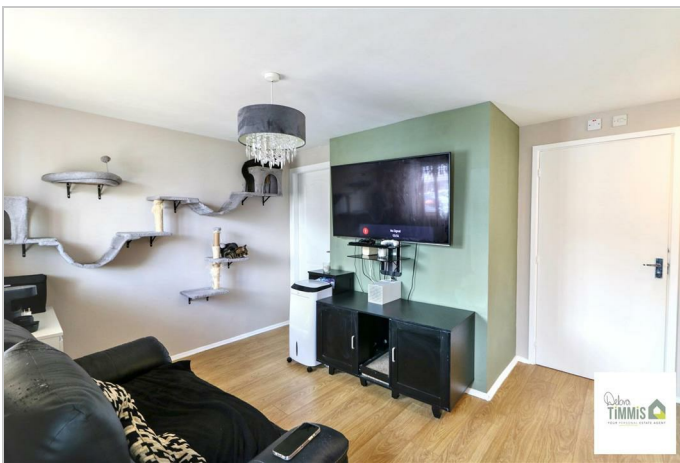


## Lock Keepers Way Hanley Stoke-On-Trent ST1 3NS



**Offers In The Region Of £55,000**

## Lock Keepers Way, Hanley, Stoke-On-Trent, ST1 3NS

A perfect property if you want to get your foot on the ladder  
A lovely APARTMENT such as this, and a price that will make you gladder  
There's ONE bedroom with plenty of room -  
Open-plan lounge/kitchen and cupboard with space for a broom -  
You'll get your own ALLOCATED PARKING SPACE -  
Interested? then there's no time to waste -  
Ring DEBRA TIMMIS ESTATE AGENTS, pick up your phone -  
and make this your dream home

Located in Lock Keepers Way, Hanley, this one-bedroom apartment presents an ideal opportunity for first-time buyers or those seeking a convenient living space. The property boasts a well-designed open-plan lounge and kitchen, creating a welcoming atmosphere perfect for both relaxation and entertaining.

The apartment features a comfortable bedroom and a modern shower room, ensuring all essential amenities are readily available. With double glazing and central heating throughout, residents can enjoy a warm and inviting environment year-round.

Additionally, the property includes allocated parking, a valuable asset in this bustling area, and access to a communal garden complete with a seating area, perfect for enjoying the outdoors. The location is particularly advantageous, with local amenities just a stone's throw away, making daily errands and leisure activities easily accessible.

This delightful apartment is not only a practical choice but also a wonderful place to call home. We highly recommend scheduling a viewing to fully appreciate the charm and convenience this property has to offer.

### Ground Floor

#### Open-Plan Lounge/ Kitchen

14'2" x 11'7" narrowing to 8'9" (4.33 x 3.55 narrowing to 2.67)

Double glazed window to the front aspect. Radiator. Kitchen area comprises two ring electric hob, built-in oven. Inset sink with mixer tap. Wall mounted unit. Worktop with units below. Pantry.

#### Shower Room

6'1" x 4'4" to cubicle (1.86 x 1.33 to cubicle)

Shower cubicle housing mains shower, pedestal wash hand basin and low level WC. Radiator. Cupboard housing space for a washing machine.



#### Bedroom One

10'0" x 7'10" (3.06 x 2.40)

Double glazed window. Fitted unit. Radiator.



#### Externally

Shared access to the boiler room. There is a communal seating area to the front aspect.

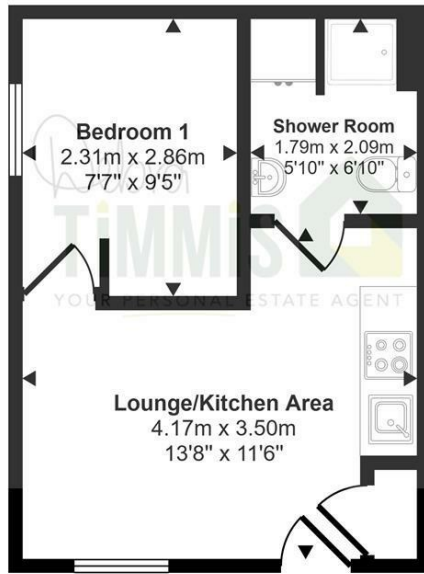


### Leasehold

Our client has advised us that there is a monthly service charge to include the gas, electric, water and building insurance which is approximately £225.20 per month. Ground rent approximately £90.00 per year. Please note this information could be subject to change any interest parties are advised to make their own enquiries. There is approximately 106 years left on the lease.

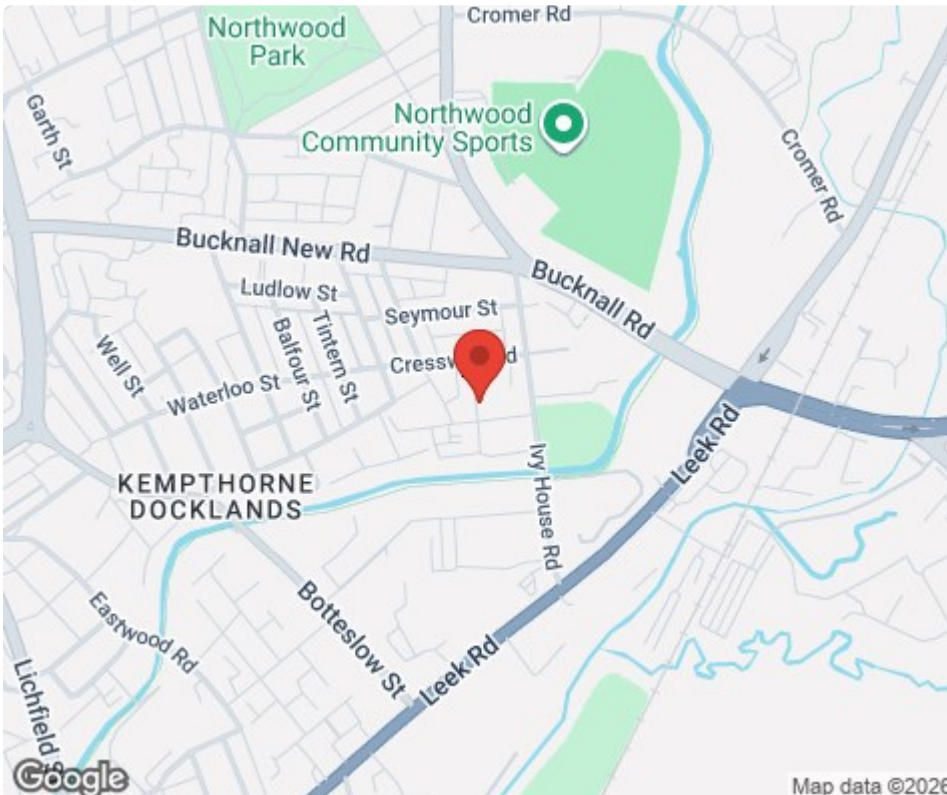


Approx Gross Internal Area  
24 sq m / 259 sq ft



Floorplan

This floorplan is only for illustrative purposes and is not to scale. Measurements of rooms, doors, windows, and any items are approximate and no responsibility is taken for any error, omission or mis-statement. Icons of items such as bathroom suites are representations only and may not look like the real items. Made with Made Snappy 360.



Tenure: Leasehold  
Council Tax Band: A

Energy Efficiency Rating		
	Current	Potential
Very energy efficient - lower running costs		
(92 plus) <b>A</b>		
(81-91) <b>B</b>		
(69-80) <b>C</b>	75	75
(55-68) <b>D</b>		
(39-54) <b>E</b>		
(21-38) <b>F</b>		
(1-20) <b>G</b>		
Not energy efficient - higher running costs		
<b>England &amp; Wales</b>	EU Directive 2002/91/EC	

Debra Timmis Estate Agents for themselves and for the vendors or lessors of this property whose agents they are give notice that (i) the particulars are set out as a general outline only for the guidance of intending purchasers or lessees, and do not constitute, nor constitute part of an offer or contract; (ii) all descriptions, dimensions, references to condition and necessary permissions for use and occupation, and other details are given without responsibility and intending purchasers or tenants should not rely on them as statements or representations of fact but must satisfy themselves by inspection or otherwise as to the correctness of each of them; (iii) no person in the employment of Debra Timmis Estate Agents has any authority to make or give any representation or warranty whatsoever in relation to this property.