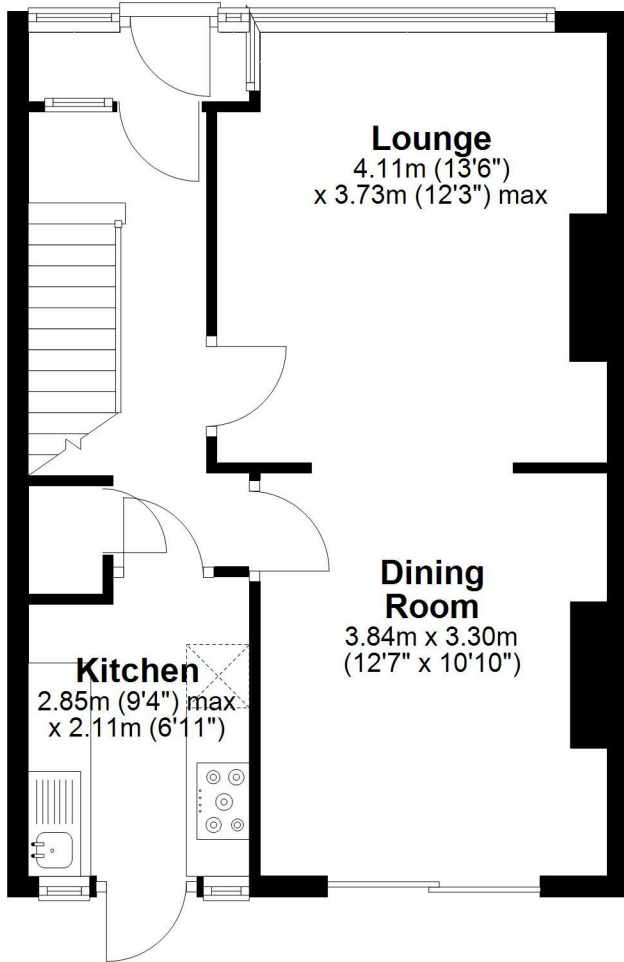


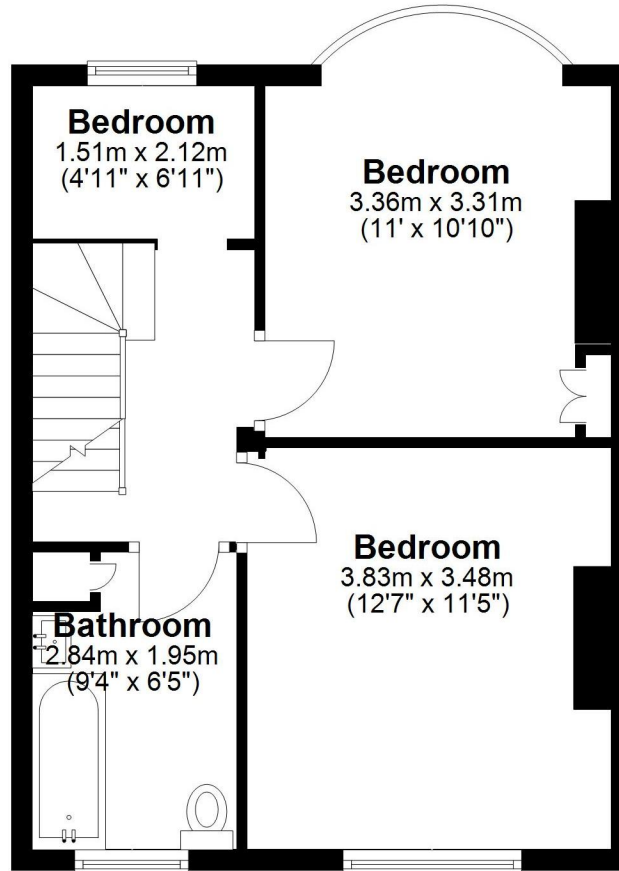
Ground Floor

Approx. 44.4 sq. metres (478.3 sq. feet)



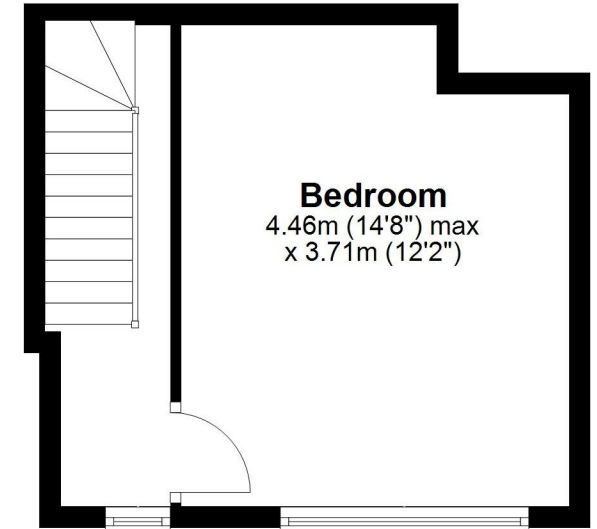
First Floor

Approx. 40.8 sq. metres (439.1 sq. feet)



Second Floor

Approx. 21.6 sq. metres (232.7 sq. feet)



Total area: approx. 106.9 sq. metres (1150.2 sq. feet)

This plan is for illustration purpose only – not to scale
Plan produced using PlanUp.□□