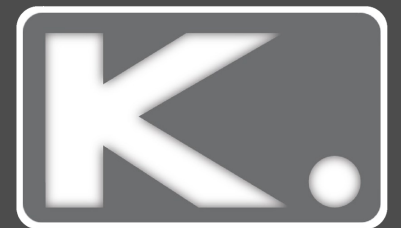
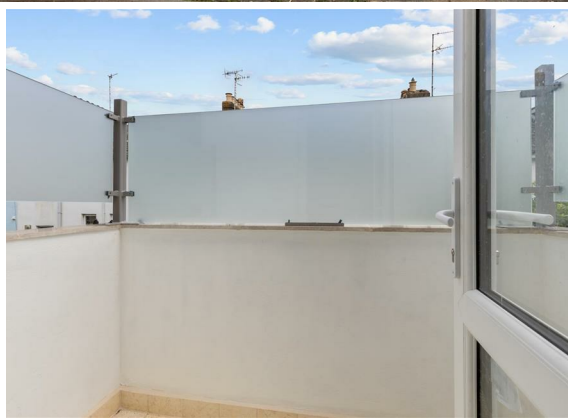


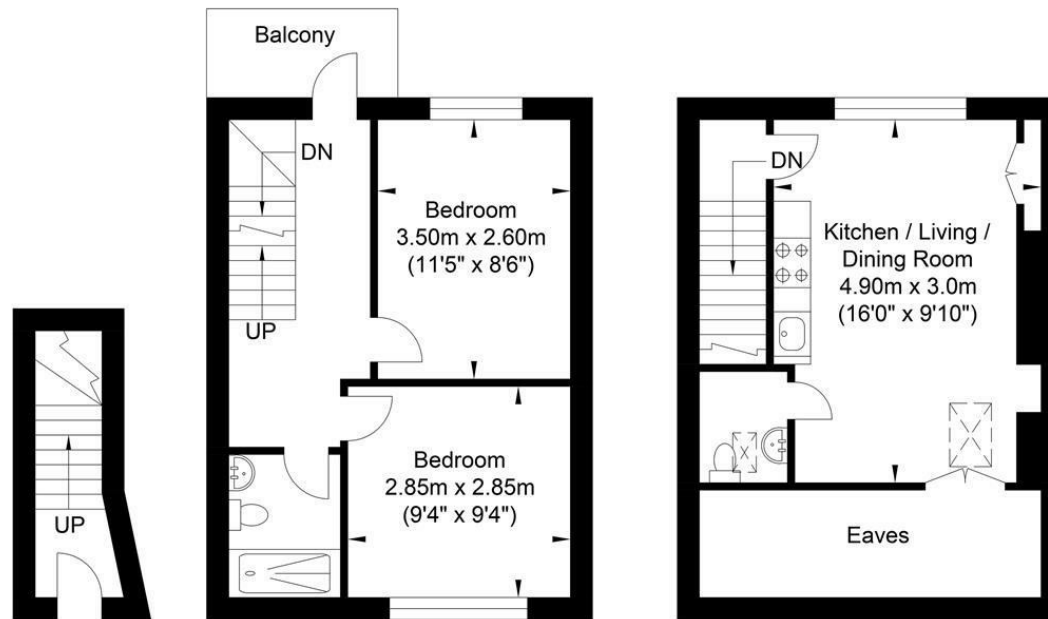


**2 Bed  
Maisonette  
located in**

**£425,000**



# St Martins Street, Brighton



Ground Floor  
Approximate Floor Area  
37.13 sq ft  
(3.45 sq m)

First Floor  
Approximate Floor Area  
320.11 sq ft  
(29.74 sq m)

Second Floor  
Approximate Floor Area  
243.15 sq ft  
(22.59 sq m)

Approximate Gross Internal Area (Excluding Eaves) = 55.78 sq m / 600.41 sq ft  
Illustration for identification purposes only, measurements are approximate, not to scale.

## DIRECTIONS

## CONTACT

Kendrick Property Services - Brighton  
10-12 Lewes Road  
Brighton  
East Sussex  
BN2 3HP

E:  
sales@kendrickpropertyservices.co.uk  
T: 01273 600162  
www.kendrickpropertyservices.co.uk

Energy Efficiency Rating		
	Current	Potential
Very energy efficient - lower running costs		
(92 plus) A		
(81-91) B		
(69-80) C	75	79
(55-68) D		
(39-54) E		
(21-38) F		
(1-20) G		
Not energy efficient - higher running costs		
EU Directive 2002/91/EC		
England & Wales		

