



21 Lynch Hill, Kensworth, LU6 3RD
Offers In Excess Of £400,000

space
estates.com

A three-bedroom semi-detached family home located in the sought-after village of Kensworth.

This character-filled property showcases exposed beams throughout the ground floor and log burner set within a feature fireplace. Both the kitchen and bathroom have been tastefully updated, blending modern finishes with the home's traditional appeal.

The accommodation comprises: a spacious open-plan reception room offering flexible living and dining areas, a modern fitted kitchen with direct access to the rear garden, a double bedroom, a family bathroom, and master bedroom accessed via the third bedroom—ideal as a dressing room, nursery, or study.

Externally, the property benefits from a block-paved driveway providing off-street parking. The rear garden features lawn, raised flower beds, a patio seating area, and convenient gated side access from the driveway.

Freehold Tenure.
Council Tax Band D.

- VILLAGE LOCATION
- OFF STREET DRIVEWAY PARKING
- LOG BURNER FIRE PLACE
- SEMI DETACHED PROPERTY
- FEATURE BEAMS THROUGHOUT GROUND FLOOR
- MODERN KITCHEN AND BATHROOM

Open plan reception room

Modern kitchen

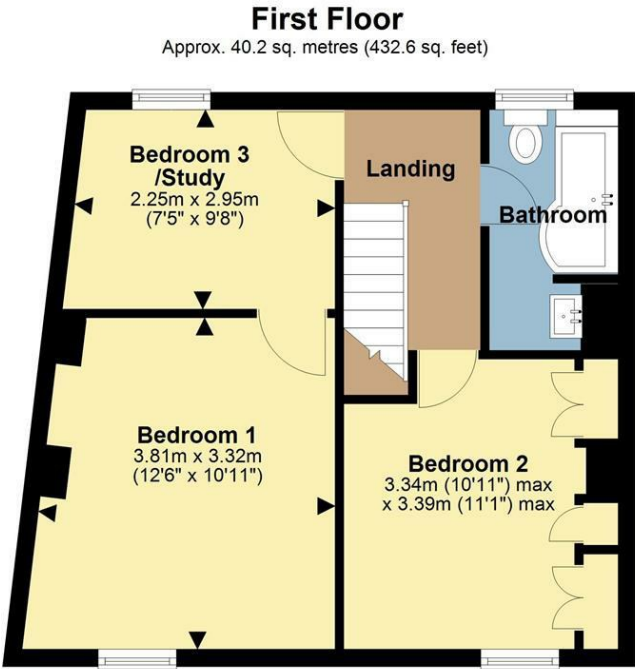
Master bedroom accessed via bedroom three

Second double bedroom with built in storage

Family bathroom

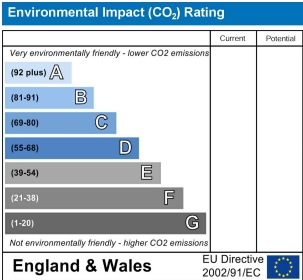
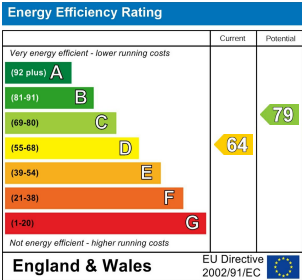
Garden with side access to driveway

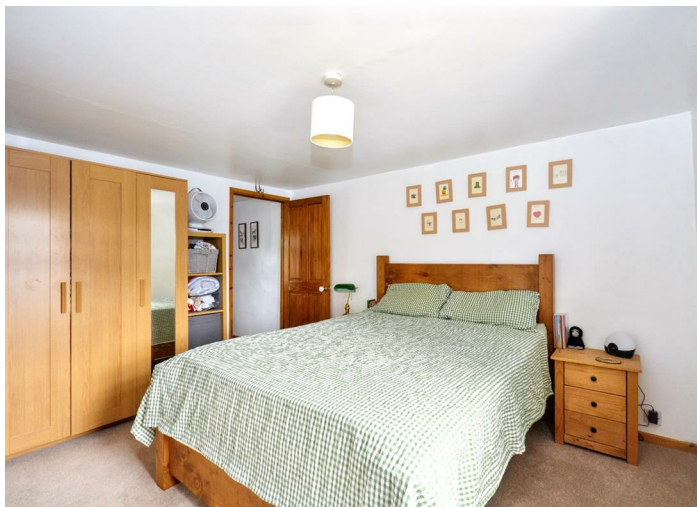




Total area: approx. 80.1 sq. metres (862.2 sq. feet)

Plan for illustrative purposes only, measurements not to be relied on. Always take your own measurements. © epcplan@icloud.com
Plan produced using PlanUp. □





space
estates.com

These particulars, whilst believed to be accurate are set out as a general outline only for guidance and do not constitute any part of an offer or contract. Intending purchasers should not rely on them as statements of representation of fact, but must satisfy themselves by inspection or otherwise as to their accuracy. No person in this company's employment has the authority to make or give any representation or warranty in respect of the property.

16 London Road, St Albans, Hertfordshire, AL1 1NG
Tel: 01727 581239 Email: sales@spaceestates.com
www.spaceestates.com