



& 25 Woolwich Manor Way, Lodon, E16 2NJ

£1,350

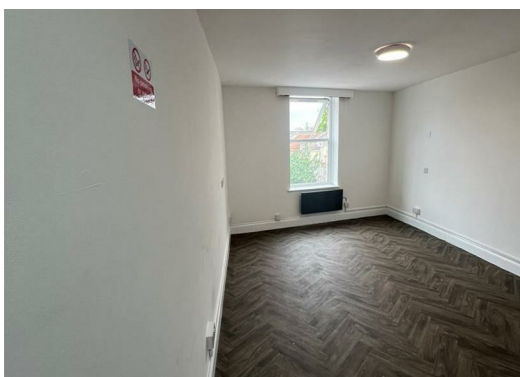
We are pleased to present a newly refurbished studio flat available to let in the vibrant area of Woolwich, E16. This charming property is ideally suited for both students and working professionals, offering a perfect blend of comfort and convenience.


The flat has been thoughtfully designed to maximise space and light, creating a welcoming atmosphere for its residents. Its modern finishes and contemporary style make it an attractive option for those seeking a fresh living environment.


Situated in close proximity to City Airport, this location is particularly advantageous for those who travel frequently. Additionally, the nearby Gallions Reach Retail Park provides a variety of shopping options, ensuring that all your daily needs are easily met.

With excellent transport links, residents will find it easy to commute to central London and beyond, making this flat an ideal choice for anyone looking to enjoy the benefits of city living while residing in a more tranquil setting.

This studio flat represents a fantastic opportunity for anyone looking to secure a modern and convenient home in Woolwich. Do not miss the chance to make this delightful property your own.



Energy Efficiency Rating		
	Current	Potential
Very energy efficient - lower running costs		
(92 plus) A		
(81-91) B		
(69-80) C		
(55-68) D		
(39-54) E		
(21-38) F		
(1-20) G		
Not energy efficient - higher running costs		
England & Wales	EU Directive 2002/91/EC	

Environmental Impact (CO ₂) Rating		
	Current	Potential
Very environmentally friendly - lower CO ₂ emissions		
(92 plus) A		
(81-91) B		
(69-80) C		
(55-68) D		
(39-54) E		
(21-38) F		
(1-20) G		
Not environmentally friendly - higher CO ₂ emissions		
England & Wales	EU Directive 2002/91/EC	



THE PROPERTY MISDESCRIPTIONS ACT 1991: The Agent has not tested any apparatus, equipment, fixtures and fittings or services and so cannot verify that they are in working order or fit for the purpose. A Buyer is advised to obtain verification from their Solicitor or Surveyor. References to the Tenure of a property are based on information supplied by the Seller. The Agent has not had sight of the title documents. A Buyer is advised to obtain verification from their Solicitor. Items shown in photographs are NOT included unless specifically mentioned within the sales particulars. They may however be available by separate negotiation. Buyers must check the availability of any property and make an appointment to view before embarking on any journey to see a property. Although these particulars are thought to be materially correct their accuracy cannot be guaranteed and they do not form part of any contract.

All measurements are approximate

MISREPRESENTATION ACT 1967: The property details have been produced in good faith, are set out as a general guide and do not constitute the whole or part of any contract. All liability, in negligence or otherwise, arising