



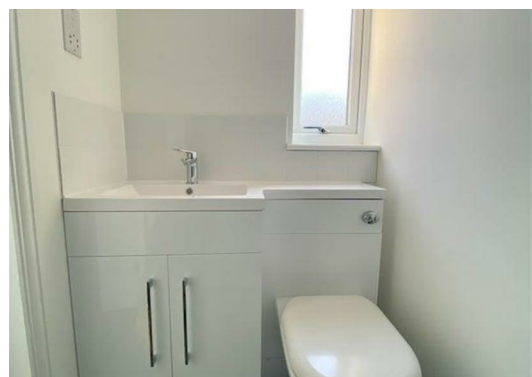
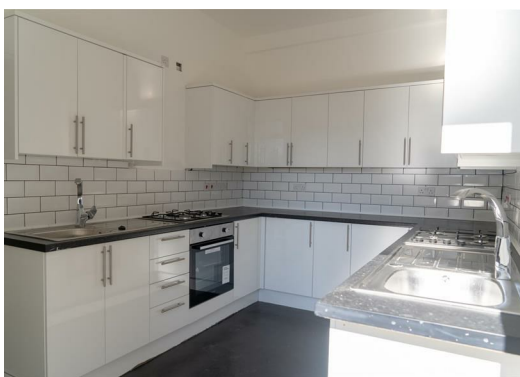
## St. Johns Road, Ilford, Essex IG2 7BB

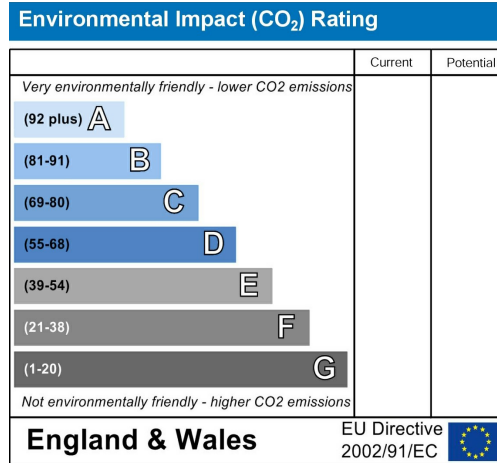
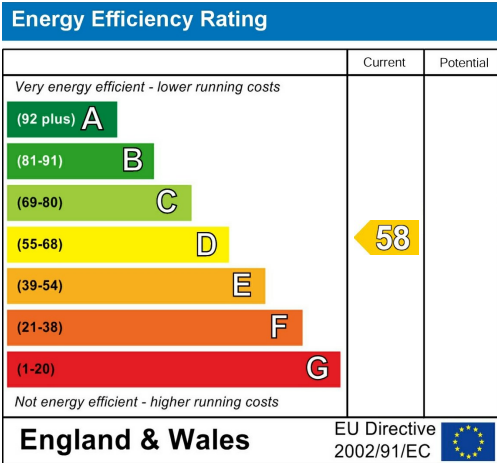
£850

Welcome to St. Johns Road, Ilford - a charming location offering a delightful en suite room for rent. This property boasts a cozy bedroom and a well-equipped bathroom, perfect for a comfortable living experience. Situated close to Newbury Park, you'll find yourself in a convenient location with easy access to all amenities and restaurants.

One of the highlights of this property is the large garden, providing a serene outdoor space to relax and unwind. Additionally, the property features a spacious communal kitchen, ideal for socialising with housemates or honing your culinary skills.

Don't miss out on the opportunity to make this lovely en suite room your new home. Experience the best of both worlds - a peaceful retreat in the heart of Ilford, while still being close to all the excitement the area has to offer. Book a viewing today and envision the possibilities that await in this wonderful property. Please note the above price is for a single dwelling for a couple the price will be £1100 PCM





**THE PROPERTY MISDESCRIPTIONS ACT 1991:** The Agent has not tested any apparatus, equipment, fixtures and fittings or services and so cannot verify that they are in working order or fit for the purpose. A Buyer is advised to obtain verification from their Solicitor or Surveyor. References to the Tenure of a property are based on information supplied by the Seller. The Agent has not had sight of the title documents. A Buyer is advised to obtain verification from their Solicitor. Items shown in photographs are NOT included unless specifically mentioned within the sales particulars. They may however be available by separate negotiation. Buyers must check the availability of any property and make an appointment to view before embarking on any journey to see a property. Although these particulars are thought to be materially correct their accuracy cannot be guaranteed and they do not form part of any contract.

All measurements are approximate

**MISREPRESENTATION ACT 1967:** The property details have been produced in good faith, are set out as a general guide and do not constitute the whole or part of any contract. All liability, in negligence or otherwise, arising