



Grosvenor Park Road, London, E17 9PG


£1,600


Primeview Estates are proud to present this spacious one bedroom ground floor apartment in walthamstow. The property consist of one bathroom and one reception. The property is in a ideal location which is at close quarters with walthamstow village. It is close to many amenities and many choices of food places. The property also benefits of having wingfield park on its doorstep.

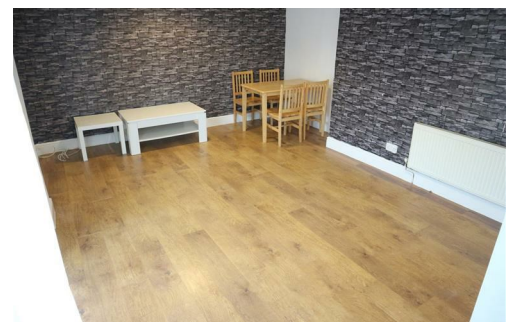
To book in a viewing call us today on 0208 923 8884



Energy rating		Current	Potential
91+	A		
81-90	B		
69-80	C		
55-68	D	58	
44-54	E		
35-43	F		
1-34	G		

Energy Efficiency Rating		
	Current	Potential
<i>Very energy efficient - lower running costs</i>		
(92 plus) A		
(81-91) B		
(69-80) C		
(55-68) D		
(39-54) E		
(21-38) F		
(1-20) G		
<i>Not energy efficient - higher running costs</i>		
England & Wales	EU Directive 2002/91/EC	

Environmental Impact (CO ₂) Rating		
	Current	Potential
<i>Very environmentally friendly - lower CO2 emissions</i>		
(92 plus) A		
(81-91) B		
(69-80) C		
(55-68) D		
(39-54) E		
(21-38) F		
(1-20) G		
<i>Not environmentally friendly - higher CO2 emissions</i>		
England & Wales	EU Directive 2002/91/EC	



THE PROPERTY MISDESCRIPTIONS ACT 1991: The Agent has not tested any apparatus, equipment, fixtures and fittings or services and so cannot verify that they are in working order or fit for the purpose. A Buyer is advised to obtain verification from their Solicitor or Surveyor. References to the Tenure of a property are based on information supplied by the Seller. The Agent has not had sight of the title documents. A Buyer is advised to obtain verification from their Solicitor. Items shown in photographs are NOT included unless specifically mentioned within the sales particulars. They may however be available by separate negotiation. Buyers must check the availability of any property and make an appointment to view before embarking on any journey to see a property. Although these particulars are thought to be materially correct their accuracy cannot be guaranteed and they do not form part of any contract.

All measurements are approximate

MISREPRESENTATION ACT 1967: The property details have been produced in good faith, are set out as a general guide and do not constitute the whole or part of any contract. All liability, in negligence or otherwise, arising