

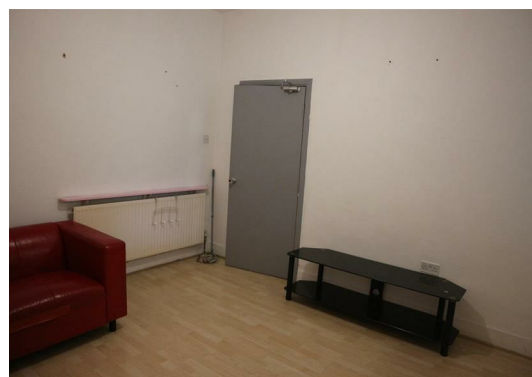


Grove green road, london, E11 4ED £2,300 Per Month


Primeview Estates are proud to present you this terraced 3 bedroom house on Grove Green Road in the vibrant area of Leytonstone, this charming three-bedroom terraced house offers a delightful blend of comfort and convenience. With two spacious reception rooms, The well-proportioned bedrooms provide ample space for family living or accommodating guests, while the bathroom is conveniently located to serve the household.

One of the standout features of this home is its generous garden, which presents an excellent opportunity for outdoor enjoyment, weather its, children's play, or simply unwinding in the fresh air. The property is ideally situated just a short distance from Leyton tube station, making commuting into central London a breeze.


In addition to its excellent transport links, the house is close to a variety of local amenities, including shops, cafes, and parks, ensuring that everything you need is within easy reach. This property is not just a house; it is a wonderful opportunity to create a warm and welcoming home in a thriving community. call us today on 0208 923 8884 to book in your viewing.



Energy Efficiency Rating

| | Current | Potential |
|--|----------------------------|---|
| <i>Very energy efficient - lower running costs</i> | | |
| (92 plus) A | | |
| (81-91) B | | |
| (69-80) C | | |
| (55-68) D | 68 | |
| (39-54) E | | |
| (21-38) F | | |
| (1-20) G | | |
| <i>Not energy efficient - higher running costs</i> | | |
| England & Wales | EU Directive 2002/91/EC |  |

Environmental Impact (CO₂) Rating

| | Current | Potential |
|--|----------------------------|---|
| <i>Very environmentally friendly - lower CO2 emissions</i> | | |
| (92 plus) A | | |
| (81-91) B | | |
| (69-80) C | | |
| (55-68) D | | |
| (39-54) E | | |
| (21-38) F | | |
| (1-20) G | | |
| <i>Not environmentally friendly - higher CO2 emissions</i> | | |
| England & Wales | EU Directive 2002/91/EC |  |



THE PROPERTY MISDESCRIPTIONS ACT 1991: The Agent has not tested any apparatus, equipment, fixtures and fittings or services and so cannot verify that they are in working order or fit for the purpose. A Buyer is advised to obtain verification from their Solicitor or Surveyor. References to the Tenure of a property are based on information supplied by the Seller. The Agent has not had sight of the title documents. A Buyer is advised to obtain verification from their Solicitor. Items shown in photographs are NOT included unless specifically mentioned within the sales particulars. They may however be available by separate negotiation. Buyers must check the availability of any property and make an appointment to view before embarking on any journey to see a property. Although these particulars are thought to be materially correct their accuracy cannot be guaranteed and they do not form part of any contract.

All measurements are approximate

MISREPRESENTATION ACT 1967: The property details have been produced in good faith, are set out as a general guide and do not constitute the whole or part of any contract. All liability, in negligence or otherwise, arising