



FIELD END ROAD, EASTCOTE, RUISLIP HA4 9PE



Stylish Extended 3-Bedroom, 2-Bathroom Semi-Detached Home

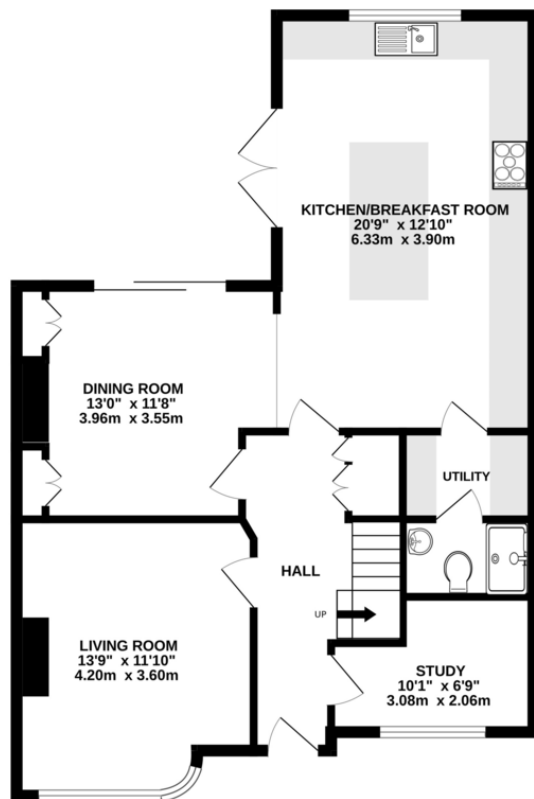
Welcome to this beautifully extended **three-bedroom, two-bathroom semi-detached home** – the perfect blend of style, space, and comfort. Immaculately maintained and thoughtfully designed, this property is truly turn-key, allowing you to settle in and start living from day one.

Tucked away in a **sought-after, family-friendly neighbourhood**, the home enjoys a peaceful setting while still being moments from everything you need – schools, shops, parks, and excellent transport connections. Step inside and feel the warm, welcoming vibe. The **light-filled living area** flows into **two versatile reception rooms**, ideal for working from home, entertaining guests, or creating a cozy retreat for the family. At the heart of the home is a **modern, well-equipped kitchen** featuring contemporary appliances and ample storage – a space designed for both function and style. Upstairs, you'll find **three spacious, naturally bright bedrooms**, perfect for a growing family or those in need of flexible space. A **contemporary family bathroom** and a **second bathroom** provide added convenience for busy households.

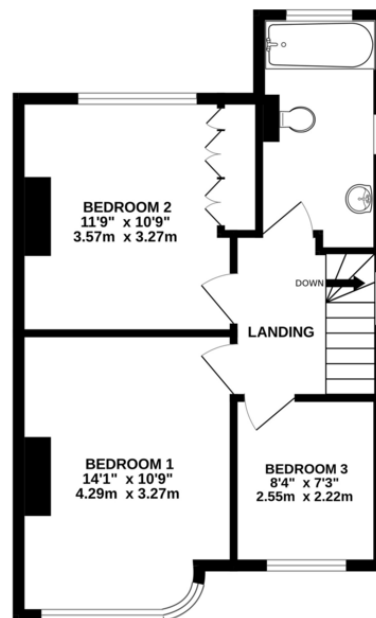
Outside, discover a **private, low-maintenance garden** – the ideal spot to unwind, host summer BBQs, or enjoy your morning coffee in peace. **School catchments include highly regarded options** such as Field End, Newnham Infant & Nursery, Cannon Lane, Pinner High, and Bishop Ramsey C of E School – making this an excellent choice for families. With **local amenities and transport links right on your doorstep**, this home ticks all the boxes for first-time buyers, upsizers, or investors alike.



GROUND FLOOR
770 sq.ft. (71.5 sq.m.) approx.



1ST FLOOR
453 sq.ft. (42.1 sq.m.) approx.



TOTAL FLOOR AREA: 1223 sq.ft. (113.7 sq.m.) approx.

Whilst every attempt has been made to ensure the accuracy of the floorplan contained here, measurements of doors, windows, rooms and any other items are approximate and no responsibility is taken for any error, omission or mis-statement. This plan is for illustrative purposes only and should be used as such by any prospective purchaser. The services, systems and appliances shown have not been tested and no guarantee as to their operability or efficiency can be given.
Made with Metropix ©2025



