



2 Bedroom Riverside Apartment Kingston Riverside, Kingston upon Thames £635,000 Leasehold

Ideally located within the iconic Kingston Riverside Development on the banks of the Thames, we are delighted to launch to the market an immaculately presented 2 Bedroom Riverside Apartment for sale. The property offers a full width Terrace with stunning views towards Canbury Gardens & the River Thames beyond.

Situated on the 1st floor of the Admiralty Building, the property offers 769 of internal living space including an open plan Living/Kitchen/Dining Room with engineered wood flooring and under floor heating 2 Double Bedrooms, the principal bedroom boasts a luxury ensuite shower room and doors opening to the private terrace.

Further double bedroom and a family bathroom.

Kingston Riverside residents benefit from Concierge Service, Lift Service, Residents Roof Garden and Internal Gardens.

Kingston Riverside is located within a short walk to Kingston's Historic Town Centre, Royal Bushy Park and Kingston Train Station with frequent trains to London Waterloo.

The property is offered to the market with no onward chain.

Parking available in the underground car park by separate arrangement

WWW.STACKANDBONNER.COM

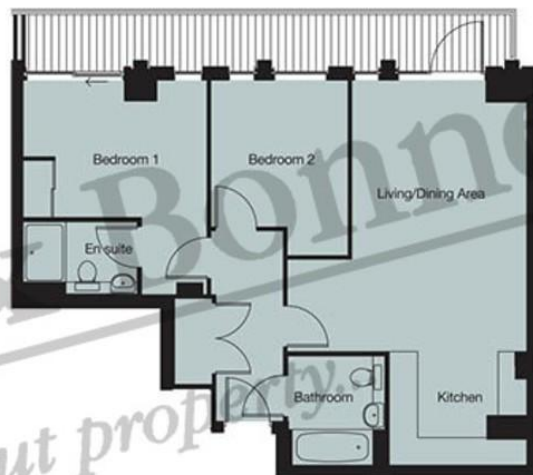
020 8547 1234

sales@stackandbonner.com



2 Bedroom Apartment

Living / Kitchen	8.12m x 3.65m	26'7" x 11'11"
Bed 1	4.54m (max) x 3.87m	14'10" (max) x 12'8"
Bed 2	3.69m x 2.86m	12'1" x 9'4"
Area	71.50m ²	769ft ²
Balcony Area	12.40m ²	133ft ²



- 2 Bedroom Riverside Apartment
- Iconic Kingston Riverside Development
- Open Plan Kitchen/Living/Dining Room
- 2 Luxury Bathrooms
- Full width private terrace
- 1st Floor
- 769 sq ft of internal living space
- Concierge Service
- Lift Service
- Residents Roof Top Garden and Internal Gardens
- Offered to the market with no onward chain
- Parking available in the underground car park by separate arrangement
- Service Charge: £5,337.68 per annum
- Ground Rent: £400 per annum
- Lease: 988 years remaining
- Council Tax: Band E - £3,041.30 Per Annum