

# S&B



## **1 Bedroom Apartment Sterling Place, New Malden £421,500 Leasehold**

Plot 67 Sterling Place, New Malden

1 Bedroom Apartment, 8th Floor, 566 sq ft

Sterling Place is a brand-new collection of 1, 2 and 3 bedroom homes in New Malden, Built by Barratt Homes London  
Nestled amongst some of southwest London's brightest and most bustling boroughs.

With Wimbledon and its famous All England Lawn Tennis Club nearby, residents have access to local high streets, world-class dining destinations and outdoor activities for all.

Excellent transport links mean Kingston, Richmond, and the Surrey Hills are within easy reach, while residents are just a 24-minute ride away from everything central London has to offer.

Contact us today for more information.

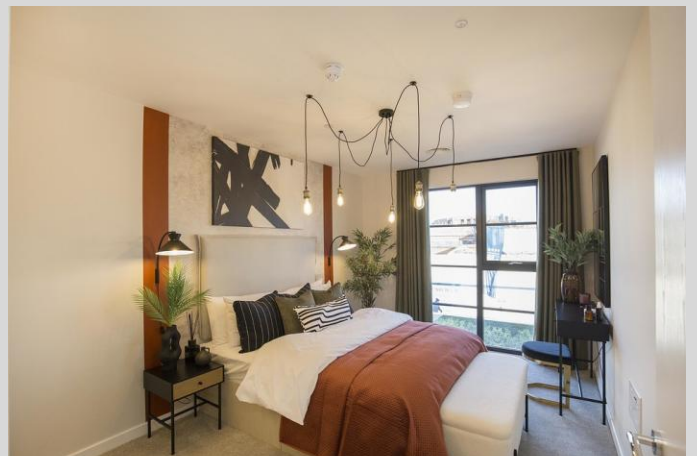
Please note, all floorplans and images are indicative.

[WWW.STACKANDBONNER.COM](http://WWW.STACKANDBONNER.COM)

020 8974 8844

[sales@stackandbonner.com](mailto:sales@stackandbonner.com)





# 1 bedroom APARTMENT

## PLOTS

104 (1), 113 (2), 122 (3), 131 (4), 140 (5), 149 (6), 158 (7),  
167 (8) & 176 (9)



\*Patio to Plot 104 on Level 1



### LIVING/DINING

13'9" x 15'10"  
(4205 x 4835 mm)

### KITCHEN

10'8" x 6'3"  
(3245 x 1900 mm)

### BEDROOM

11'8" x 11'9"  
(3550 x 3600 mm)

### BATHROOM

7'2" x 6'8"  
(2200 x 2050 mm)

### TOTAL AREA

566.6 sq ft  
(52.6 sq m)

### BALCONY\*

54 sq ft  
(5 sq m)



### LEVELS

1, 2, 3, 4, 5, 6,  
7, 8, 9

- Plot 67
- 1 Bedroom Apartment
- 8th Floor
- 566 sq ft
- South Facing
- 54 sq ft Balcony
- Residents Communal Garden
- Residents gym and yoga studio
- 999 year lease
- Estimated Service Charge: £1,590 per annum
- Please note, all floorplans and images are indicative