

A close-up photograph of several white thistle flowers. The flowers have a central green core with small yellowish-green florets. The petals are white and have a very spiky, serrated appearance. The leaves are also spiky and green. The background is dark and out of focus.

Foyle Court, Hollyfield Road,
Surbiton KT5 9AU



All images & floorplans in this brochure are for illustration purposes only



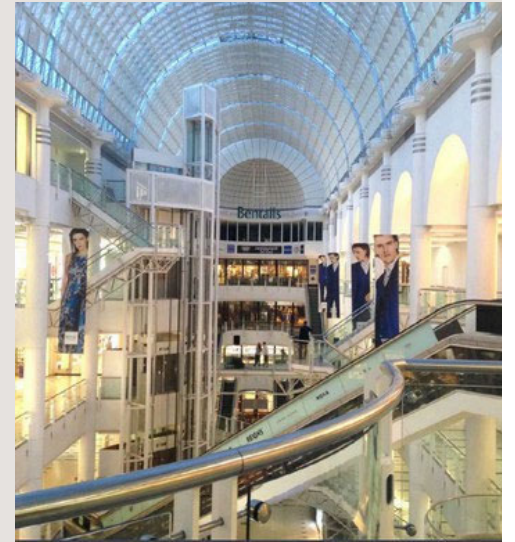
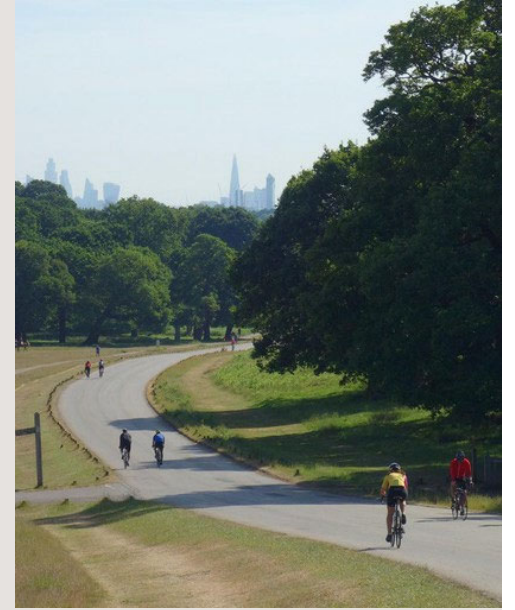
All images & floorplans in this brochure are for illustration purposes only



Surbiton:

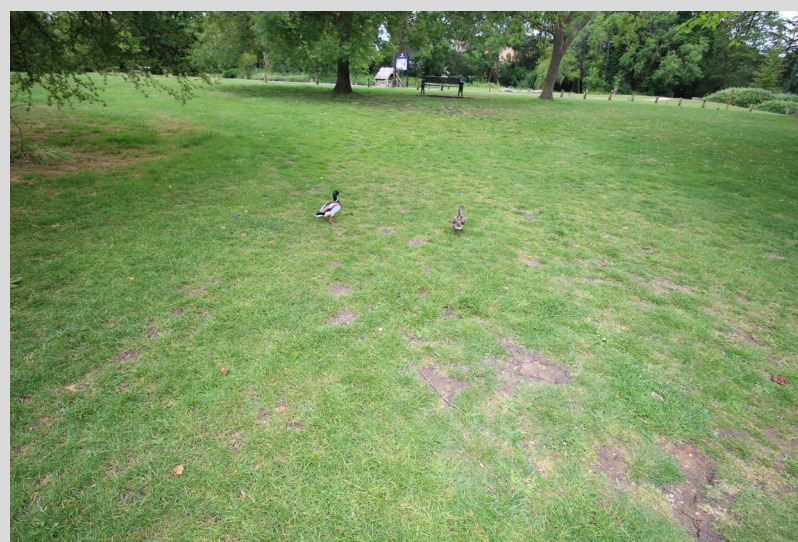
Surbiton is an affluent riverside town in South West London. It's a very vibrant location with a wide range of shops, cafes, excellent pubs and bars and award-winning restaurants. There is also a splendid selection of green spaces and parks just moments away. It should also be mentioned that it has the highly regarded Surbiton Farmers' Market on the third Saturday of every month. Surbiton is sumptuously positioned alongside the Thames and accordingly, walking, running, cycling and water sports are all on your doorstep.

The town also boasts the renowned Surbiton Racket and Fitness Club, established in 1881, which hosts the annual International Tennis Federation Surbiton Trophy which precedes the Wimbledon Championship. Surbiton is perfectly positioned with Hampton Court Palace, Bushy Park and Richmond Park and Kingston's Cosmopolitan Town Centre within easy reach. With an excellent selection of schools, a vibrant local community and trains taking only 16 minutes to Waterloo, the area has become one of the most desirable in South West London.





Foyle Court is positioned opposite Fishponds Conservation area.
A haven and tranquil retreat with parkland, ponds and wildlife.





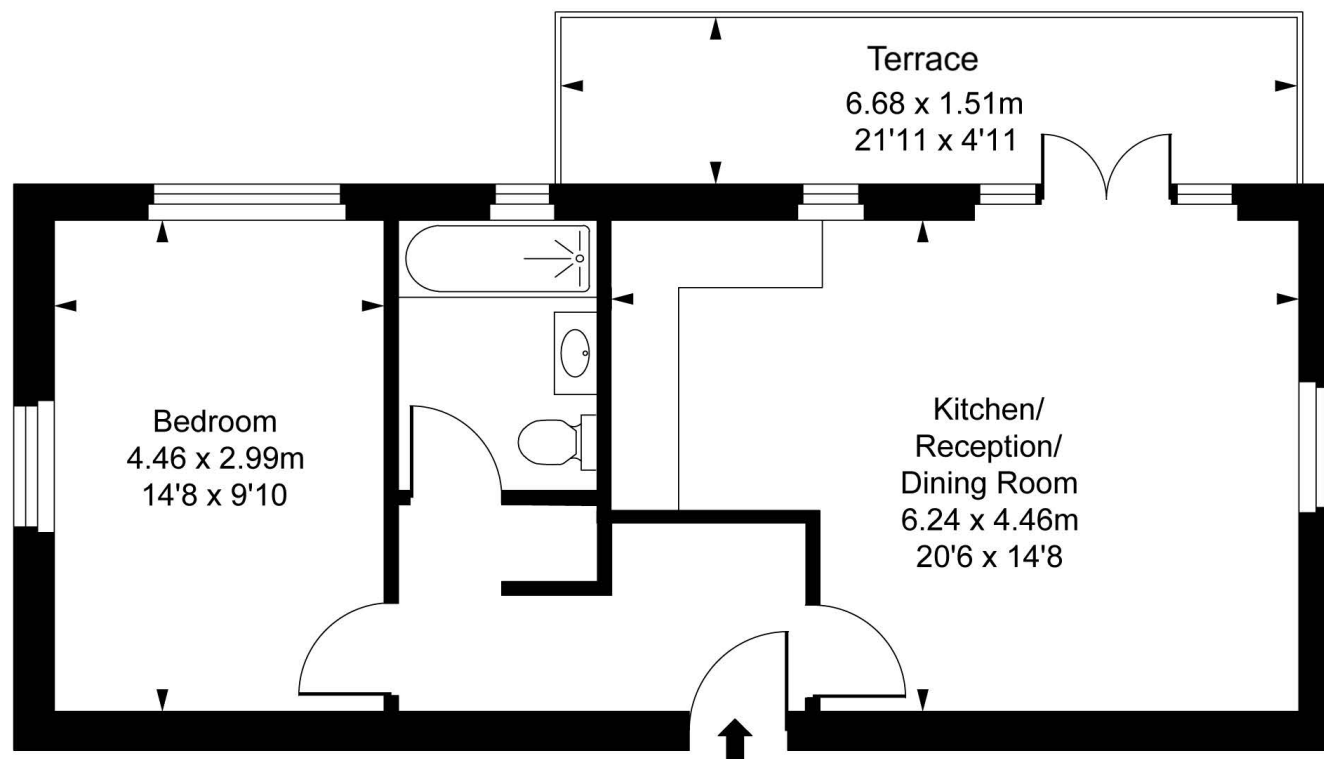
All images & floorplans in this brochure are for illustration purposes only

Foyle Court Kitchen Designs – Indicative Images



Apartment One:

Foyle Court,
 Hollyfield Road, KT5
 Approximate Gross Internal Area
 50.31 sq m / 542 sq ft



Ground Floor

ILLUSTRATION FOR IDENTIFICATION PURPOSES ONLY
ALL MEASUREMENTS AND AREA FIGURES SUPPLIED BY OTHERS, ACCURACY IS NOT GUARANTEED.
THIS PLAN MUST NOT BE REPRODUCED BY ANY OTHER PERSON WITHOUT PERMISSION

Apartment Two:

Foyle Court,
Hollyfield Road, KT5
Approximate Gross Internal Area
74.50 sq m / 802 sq ft

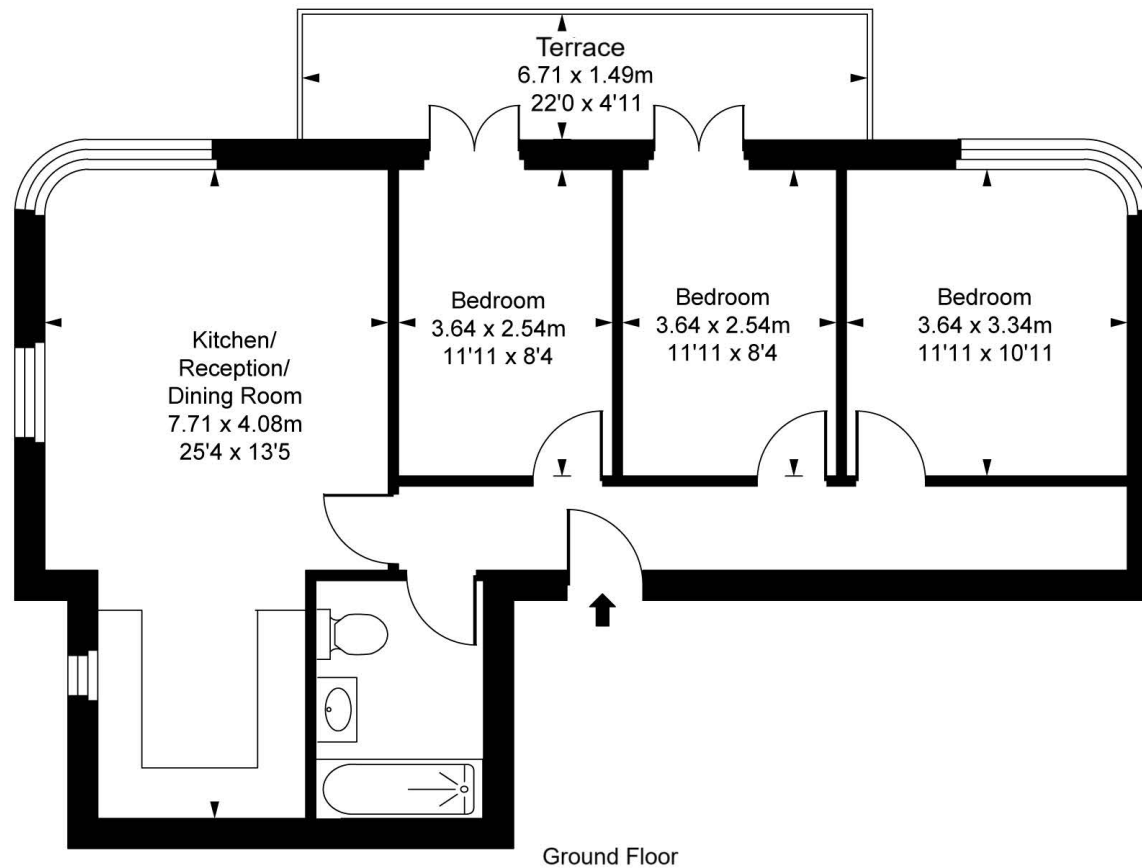


ILLUSTRATION FOR IDENTIFICATION PURPOSES ONLY
ALL MEASUREMENTS AND AREA FIGURES SUPPLIED BY OTHERS. ACCURACY IS NOT GUARANTEED.
THIS PLAN MUST NOT BE REPRODUCED BY ANY OTHER PERSON WITHOUT PERMISSION

Apartment Three:

Foyle Court,
Hollyfield Road, KT5
Approximate Gross Internal Area
50.31 sq m / 542 sq ft

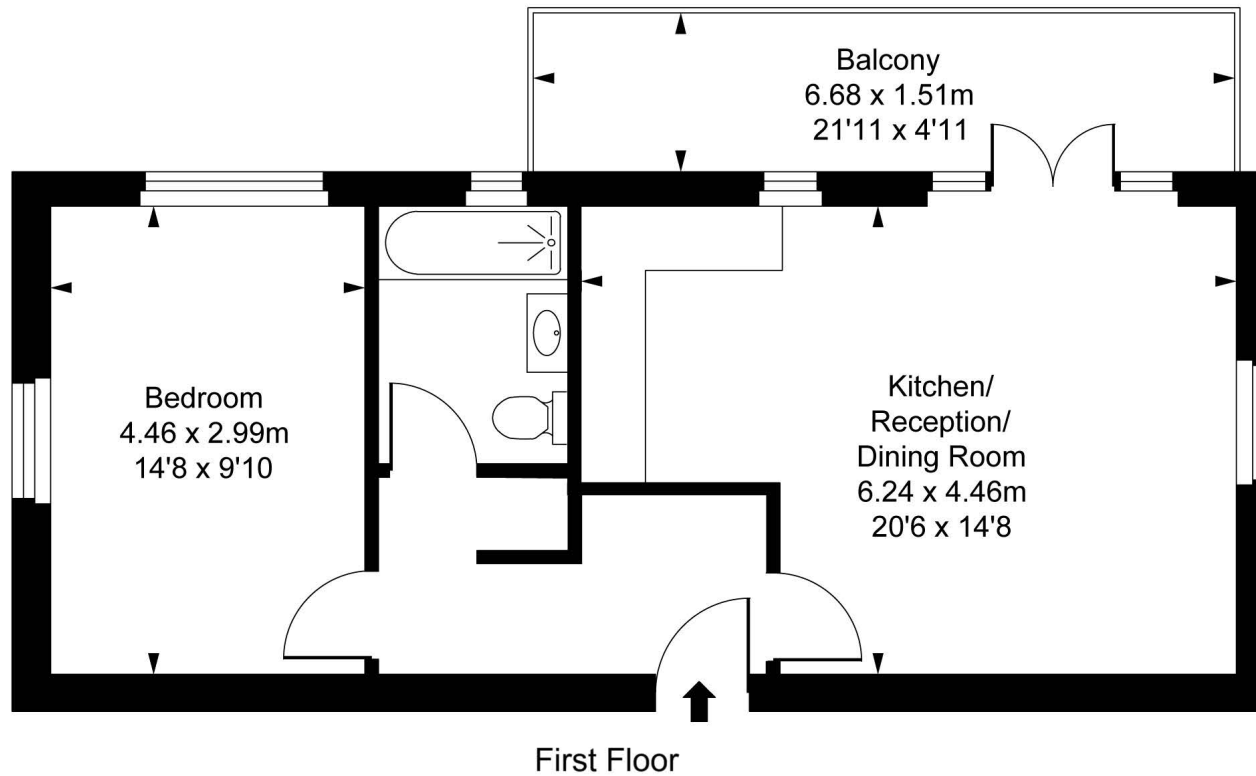
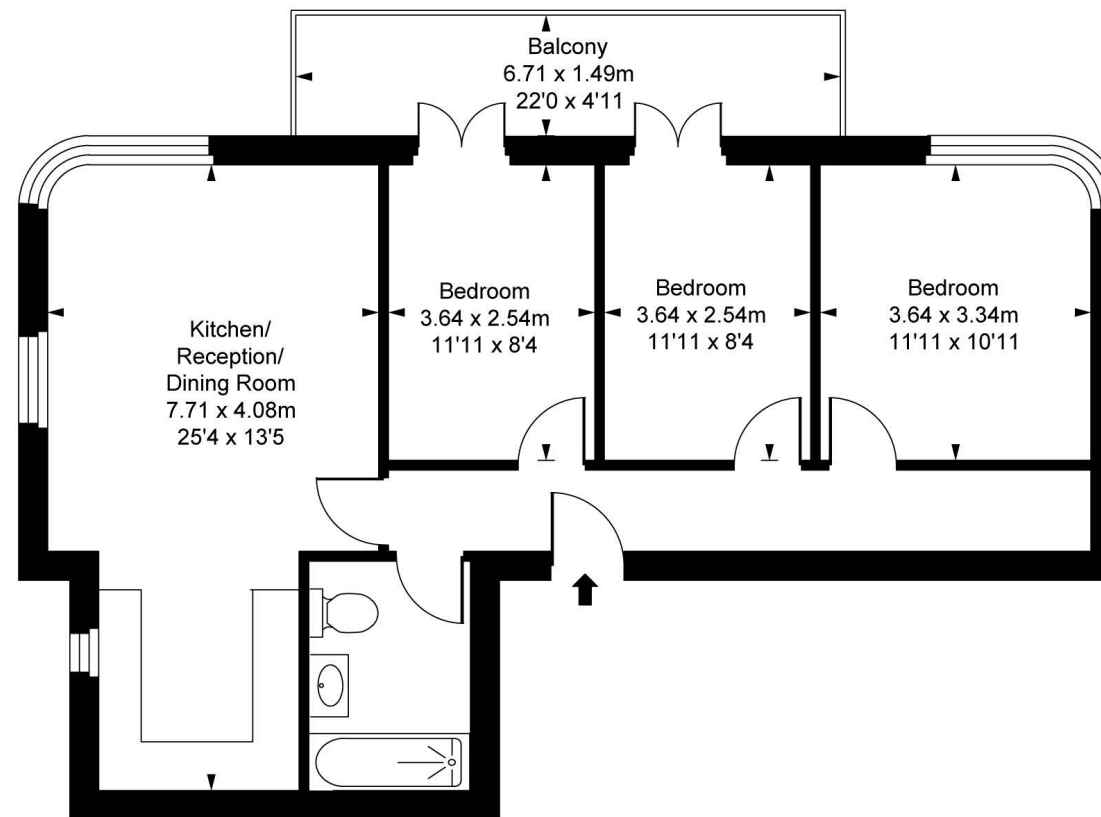


ILLUSTRATION FOR IDENTIFICATION PURPOSES ONLY
ALL MEASUREMENTS AND AREA FIGURES SUPPLIED BY OTHERS, ACCURACY IS NOT GUARANTEED.
THIS PLAN MUST NOT BE REPRODUCED BY ANY OTHER PERSON WITHOUT PERMISSION

Apartment Four:

Foyle Court,
Hollyfield Road, KT5
Approximate Gross Internal Area
74.50 sq m / 802 sq ft

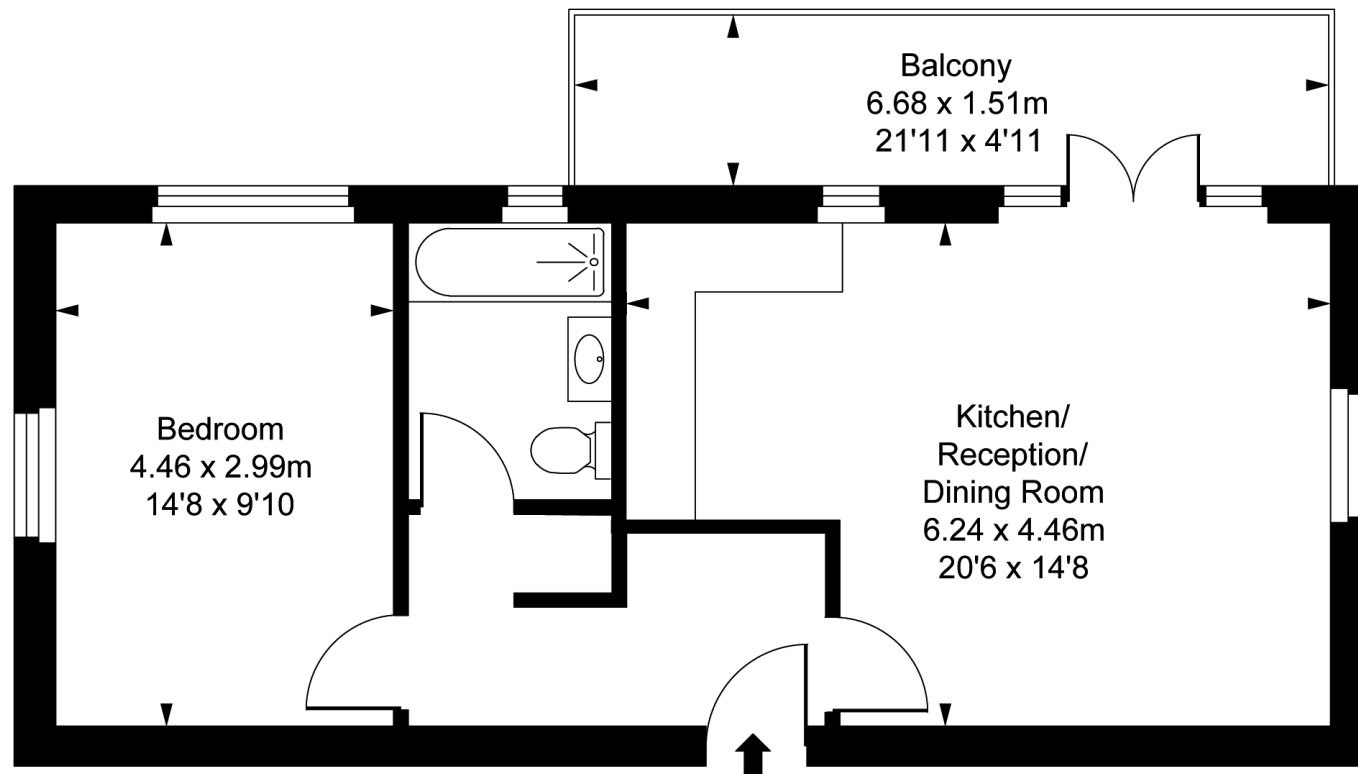


First Floor

ILLUSTRATION FOR IDENTIFICATION PURPOSES ONLY
ALL MEASUREMENTS AND AREA FIGURES SUPPLIED BY OTHERS. ACCURACY IS NOT GUARANTEED.
THIS PLAN MUST NOT BE REPRODUCED BY ANY OTHER PERSON WITHOUT PERMISSION

Apartment Five:

Foyle Court,
Hollyfield Road, KT5
Approximate Gross Internal Area
50.31 sq m / 542 sq ft

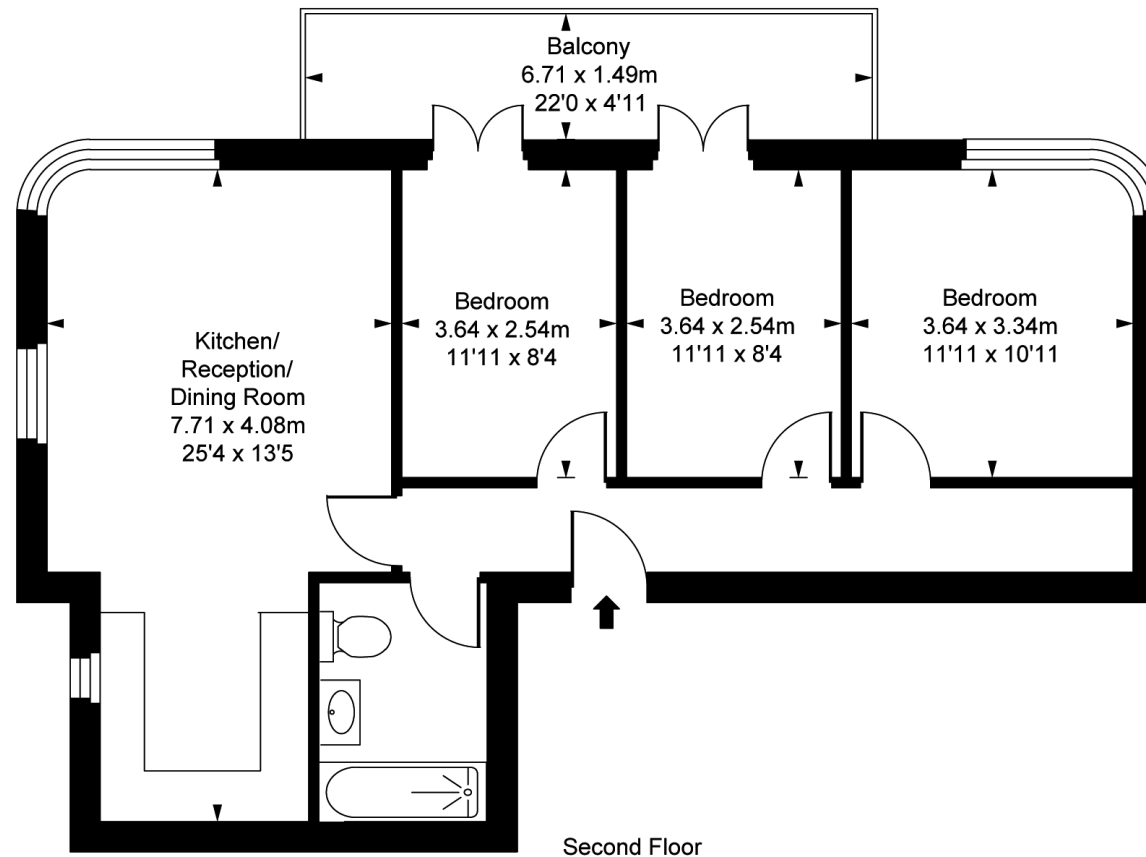


Second Floor

ILLUSTRATION FOR IDENTIFICATION PURPOSES ONLY
ALL MEASUREMENTS AND AREA FIGURES SUPPLIED BY OTHERS, ACCURACY IS NOT GUARANTEED.
THIS PLAN MUST NOT BE REPRODUCED BY ANY OTHER PERSON WITHOUT PERMISSION

Apartment Six:

Foyle Court,
Hollyfield Road, KT5
Approximate Gross Internal Area
74.50 sq m / 802 sq ft

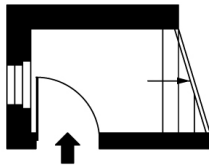


Second Floor

ILLUSTRATION FOR IDENTIFICATION PURPOSES ONLY
ALL MEASUREMENTS AND AREA FIGURES SUPPLIED BY OTHERS. ACCURACY IS NOT GUARANTEED.
THIS PLAN MUST NOT BE REPRODUCED BY ANY OTHER PERSON WITHOUT PERMISSION

Apartment Seven:

Foyle Court,
Hollyfield Road, KT5
Approximate Gross Internal Area
85.43 sq m / 920 sq ft



Second Floor Entrance
Approximate Gross Internal Area
2.65 sq m / 29 sq ft

Third Floor
Approximate Gross Internal Area
82.78 sq m / 891 sq ft

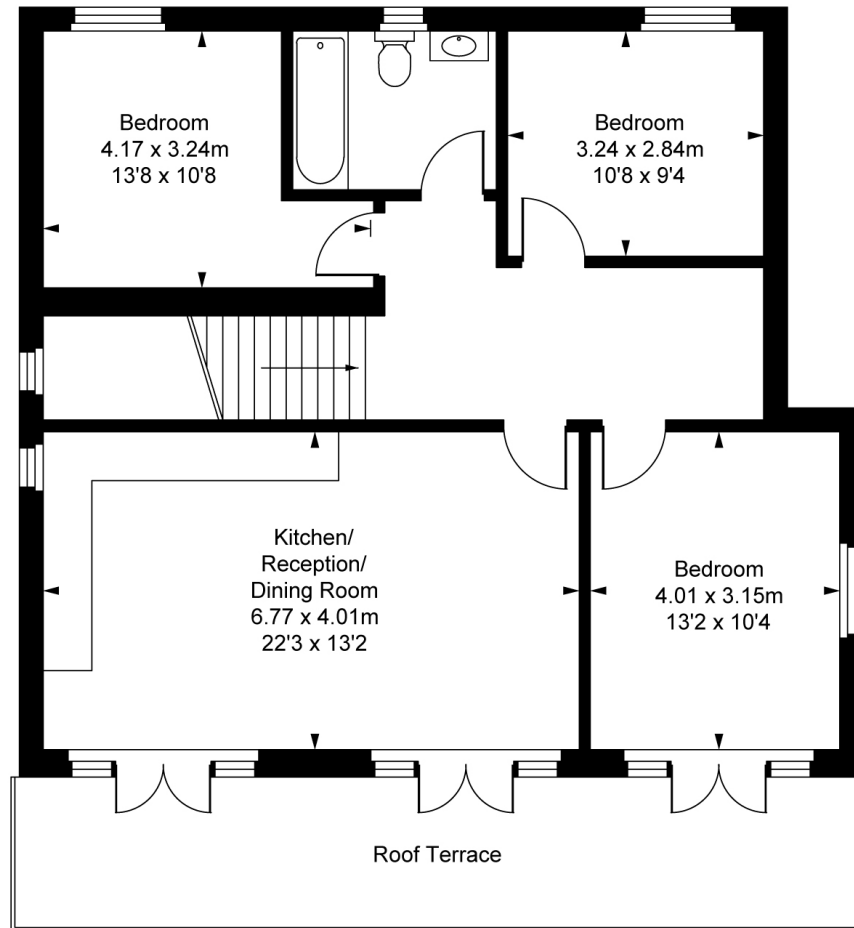


ILLUSTRATION FOR IDENTIFICATION PURPOSES ONLY
ALL MEASUREMENTS AND AREA FIGURES SUPPLIED BY OTHERS. ACCURACY IS NOT GUARANTEED.
THIS PLAN MUST NOT BE REPRODUCED BY ANY OTHER PERSON WITHOUT PERMISSION

Specification:

- KITCHEN

- Howdens Satin finish units, soft close doors
- Composite worktops
- Under cabinet lighting
- Stainless steel sink with chrome mixer tap
- Work top 100mm upstand
- Induction hob, oven and extractor
- Integrated dishwasher and fridge freezer

- ENSUITE & BATHROOMS

- White sanitaryware
- Chrome taps and shower
- Walls and floors fully tiled, alcove in bath area.

- INTERNAL FINISHES

- Emulsion painted walls and ceilings
- Ceramic wall and floor tiles in bathrooms
- Laminate flooring to kitchen and living area

ELECTRICS/LIGHTING

- LED light fittings to living room/kitchen/bathroom/hall
- TV, BT and Satellite points
- Brushed Chrome electrical faceplates throughout .

BEDROOMS

- Carpets to all bedrooms

GENERAL/SECURITY

- Cycle storage Racks
- Video entry to all apartments

Price List:

Apartment	Floor	Size (M)	Size (Sq ft)	Beds	Amenity (M)	Asking Price
1	Ground	50.31	542	1	10	£399,950
2	Ground	74.5	802	3	10	£610,000
3	First	50.31	542	1	10	£399,950
4	First	74.5	802	3	10	£610,000
5	Second	50.31	542	1	10	£399,950
6	Second	74.5	802	3	10	£620,000
7	Third	85.43	920	3	20	£660,000

All images & floorplans in this brochure are for illustration
purposes only



S&B

Stack and Bonner

Land and New Homes