



## **3 Bedroom Split Level Penthouse Apartment Sterling Place, New Malden £1,300,000 Leasehold**

Plot 171 Sterling Place, New Malden

3 Bedroom Split Level Penthouse Apartment, 10th Floor, 1,297 sq ft with a 832 sq ft south facing terrace.

Sterling Place is a brand-new collection of 1, 2 and 3 bedroom homes in New Malden, Built by Barratt Homes London

Nestled amongst some of southwest London's brightest and most bustling boroughs.

With Wimbledon and its famous All England Lawn Tennis Club nearby, residents have access to local high streets, world-class dining destinations and outdoor activities for all.

Excellent transport links mean Kingston, Richmond, and the Surrey Hills are within easy reach, while residents are just a 24-minute ride away from everything central London has to offer.

Contact us today for more information.

Please note, all floorplans and images are indicative.

[WWW.STACKANDBONNER.COM](http://WWW.STACKANDBONNER.COM)

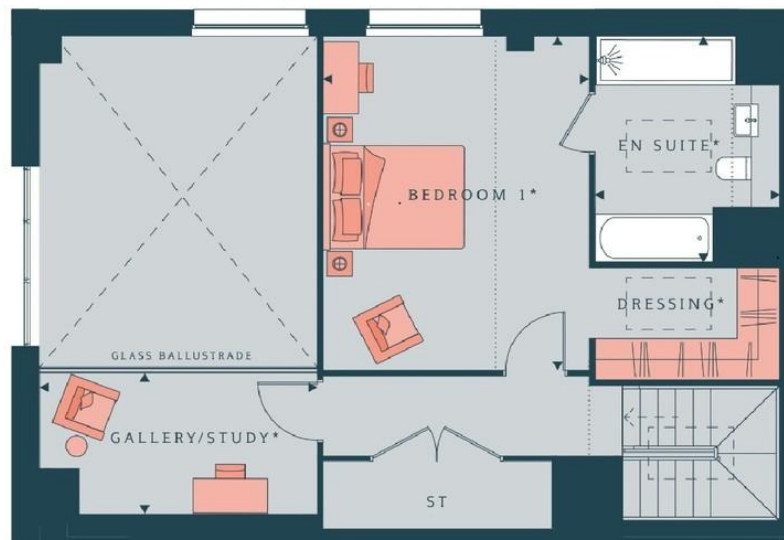
020 8974 8844

[sales@stackandbonner.com](mailto:sales@stackandbonner.com)





<b>Bathroom</b>	7'2" x 6'8"
<b>Bedroom 1</b>	12'4" x 15'10"
<b>Bedroom 2</b>	11'11" x 12'2"
<b>Bedroom 3</b>	9'0" x 12'2"
<b>Dressing</b>	5'3" x 8'7"
<b>Ensuite Bathroom</b>	8'7" x 10'9"
<b>Kitchen</b>	7'3" x 15'0"
<b>Living/Dining</b>	12'6" x 15'8"
<b>Study Upstairs</b>	7'1" x 12'6"



Whilst every attempt has been made to ensure the accuracy of the floor plan contained here, measurements of doors, windows, rooms and any other items are approximate, and no responsibility is taken for any error, omission or misstatement. This plan is for illustrative purposes only and should be used as such by any prospective purchaser. The services systems and appliances shown have not been tested, and no guarantee of their operability or efficiency can be given.

- Plot 171 Split Level Penthouse Apartment
- 3 Bedroom Apartment
- 10th Floor - 1,297 sq ft
- 832 sq ft private terrace
- Gallery Study
- Dressing area to Principal Bedroom
- Residents' gym and yoga studio
- Residents Communal Garden
- 999 year lease
- Please note, all floorplans and images are indicative