



1 Bedroom Apartment Chatsworth House, Surbiton. £335,000 Share of Freehold

With stunning views towards Hampton Court Palace and beyond, we are delighted to offer this well presented, bright and spacious one bedroom apartment to the market for sale.

Situated on the second floor of Chatsworth House the property offers a good size living/dining room, double bedroom, separate well equipped kitchen, newly fitted luxury shower room, entryphone and an allocated parking space.

Chatsworth House is ideally located within close proximity of Kingston and Surbiton Town Centres and Surbiton Station, with frequent fast trains to London Waterloo.

The property is offered to the market with no onward chain.

Contact us today to arrange your appointment to view.

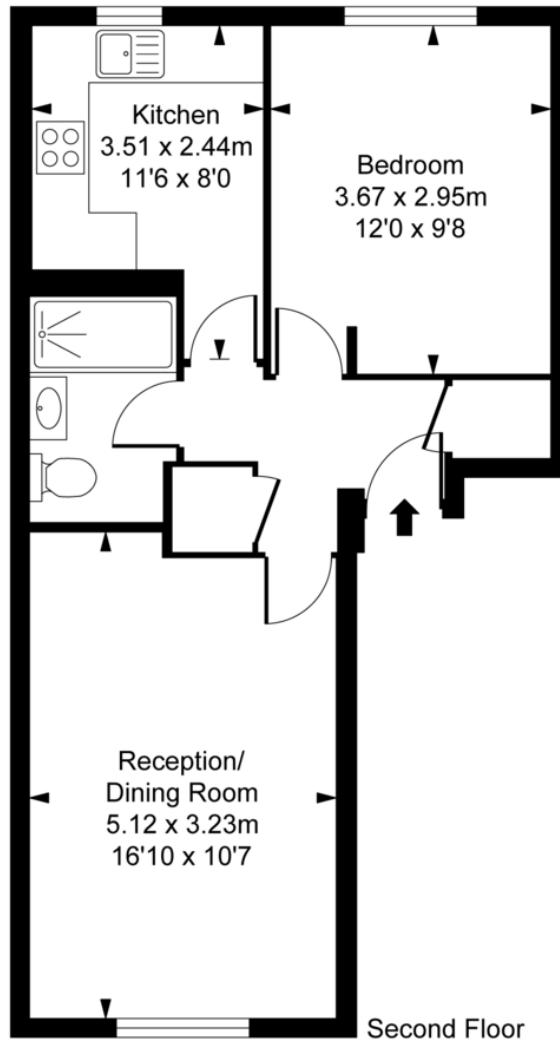
WWW.STACKANDBONNER.COM

020 8974 8844

sales@stackandbonner.com



Chatsworth House,
Portsmouth Road, KT6
Approximate Gross Internal Area
44.55 sq m / 480 sq ft



This plan is not to scale. It is for guidance and not for valuation purposes.
All measurements and areas are approximate only, and have been prepared in accordance with the current edition of the RICS Code of Measuring Practice.
© Fulham Performance

- 1 Bedroom Apartment
- Stunning views towards Hampton Court Palace and beyond
- Good size living/dining room
- Double Bedroom
- Newly Fitted Luxury Shower Room
- Entryphone
- 2nd Floor
- 480 sq ft
- Allocated Parking Space
- Share of Freehold with an underlying lease of 962 years
- Service Charge: £1,638.72 per annum
- Council Tax: Band C - £1,997.08 per annum