



## 1 Bedroom Apartment Market Place, Kingston Upon Thames. £320,000 Leasehold

First Floor, 1 Bedroom Conversion Apartment located with the Historic Market Place in the heart of Kingston upon Thames.

The apartment is located in a character building and offers, 454 sq ft of internal living space including a fully fitted kitchen, a modern shower room and residents communal storage room in the basement.

The property is ideally located within close proximity of Kingston Mainline Train Station and Kingston Town Centre.

The town centre boasts department stores Fenwicks and John Lewis, high street shops, boutique stores, coffee shops and restaurants, many offering alfresco dining overlooking the Thames.

Offered to the market, with no onward chain and a 999 year lease on completion.

[WWW.STACKANDBONNER.COM](http://WWW.STACKANDBONNER.COM)

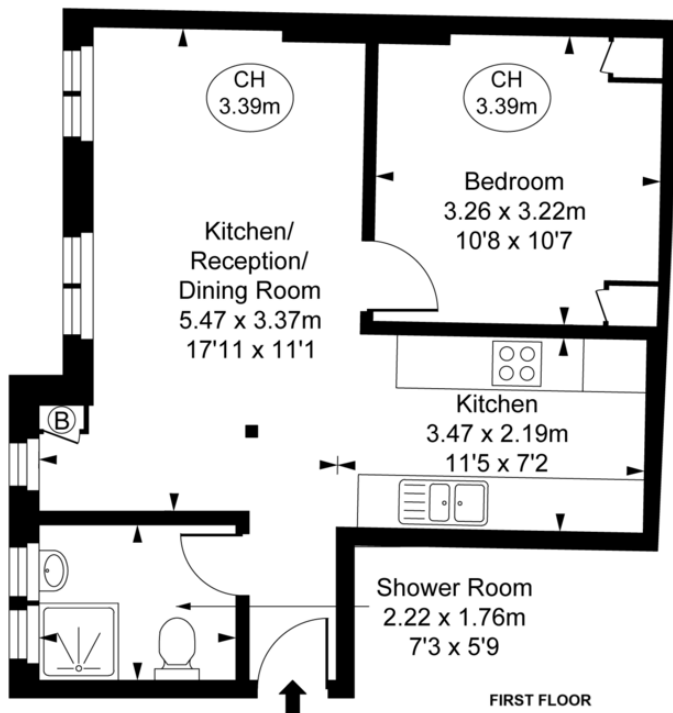
020 8974 8844

[sales@stackandbonner.com](mailto:sales@stackandbonner.com)



**Market Place, KT1**  
 Approximate Gross Internal Area  
**42.17 sq m / 454 sq ft**

( CH = Ceiling Heights )



**FIRST FLOOR**

This plan is not to scale. It is for guidance and not for valuation purposes.  
 All measurements and areas are approximate only, and have been prepared in accordance with the current edition of the RICS Code of Measuring Practice.  
 © Fulham Performance

- 1st Floor Conversion Apartment
- Character Building
- 1 Double Bedroom
- Fully Fitted Kitchen
- Reception Room
- Modern Shower Room
- 454 sq ft
- Residents Communal Basement Storage Room
- New 999 year Lease
- Chain Free
- Council Tax: Band C - £2,211.86 per annum