



1 Bedroom Apartment Market Place, Kingston Upon Thames. £350,000 Leasehold

Top Floor 1 Bedroom Conversion Apartment located with the Historic Market Place in the heart of Kingston upon Thames.

This rarely available character apartment offers far reaching views over the Kingston's historic market place.

Exposed beams, 523 sq ft of internal living space including a spacious open plan reception room with a fully fitted kitchen, a modern shower room and residents communal storage room in the basement.

The property is ideally located within close proximity of Kingston Mainline Train Station and Kingston Town Centre.

The town centre boasts department stores Fenwicks and John Lewis, high street shops, boutique stores, coffee shops and restaurants, many offering alfresco dining overlooking the Thames.

Offered to the market, with no onward chain and a 999 year lease on completion.

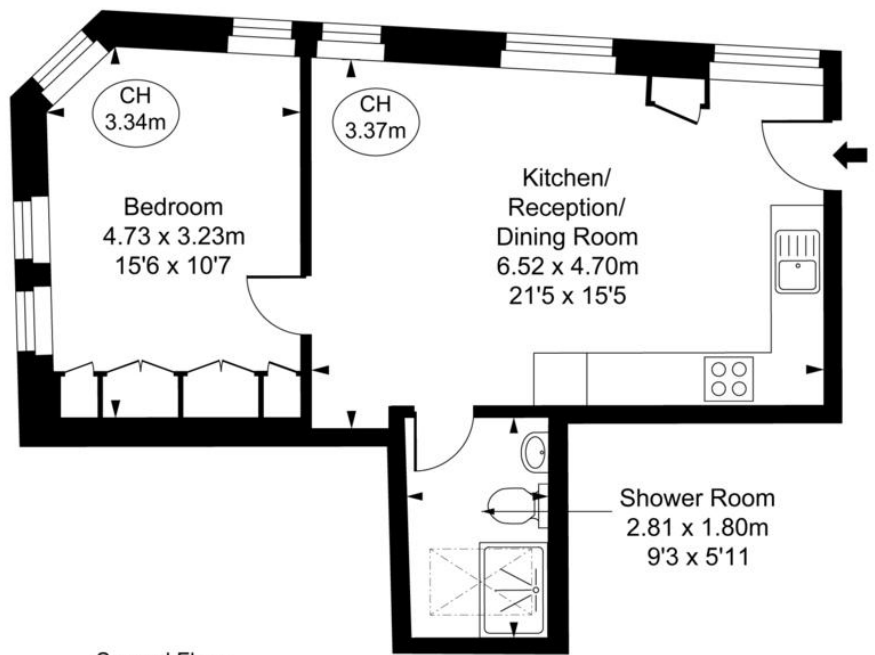
WWW.STACKANDBONNER.COM

020 8974 8844

sales@stackandbonner.com



Market Place,
Kingston Upon Thames, KT1
Approximate Gross Internal Area
48.57 sq m / 523 sq ft
(CH = Ceiling Heights)



Second Floor

This plan is not to scale. It is for guidance and not for valuation purposes.
All measurements and areas are approximate only, and have been prepared in accordance with the current edition of the RICS Code of Measuring Practice.
© Fulham Performance

- Top Floor Conversion Apartment
- Character Building
- 1 Double Bedroom
- Fully Fitted Kitchen
- Spacious Reception Room
- Modern Shower Room
- 523 sq ft
- Residents Communal Basement Storage Room
- New 999 year lease
- Chain Free
- Council Tax: Band C - £2,211.86 per annum