



Three Bedroom Semi Detached Cottage Kingston Upon Thames, KT1 3BN £665,000 Freehold

A charming and characterful three-bedroom period cottage, tucked away on a private and secluded road, offered to the market in good order throughout and with no onward chain.

The ground floor features two separate reception rooms with refurbished floorboards, a modern newly refitted kitchen, and a generous understairs storage cupboard currently used as a home office.

Arranged over split levels, the first floor offers three well-proportioned bedrooms, a family bathroom, and a separate WC.

The current owners have thoughtfully upgraded the property, including replacing the kitchen, adding underfloor insulation, exterior wall insulation and fitting new carpets, and upgrading the electric storage heaters. Double-glazed windows throughout.

Outside, the property benefits from large private front and rear gardens, as well as off-street parking.

There is also significant potential to extend to the rear and into the loft (STPP) Viewings are highly recommended.

WWW.STACKANDBONNER.COM

020 8974 8844

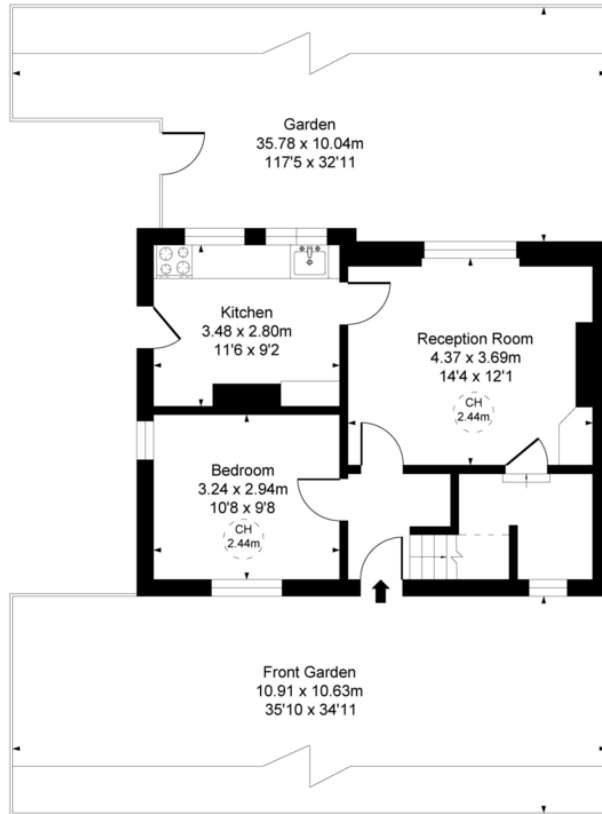
sales@stackandbonner.com



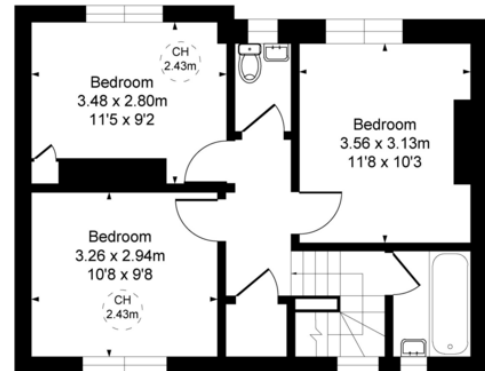
The Cottage, Lower Marsh Lane, KT1

Approximate Gross Internal Area
90.64 sq m / 976 sq ft

(CH = Ceiling Heights)



Ground Floor



First Floor

This plan is not to scale. It is for guidance and not for valuation purposes.
All measurements and areas are approximate only, and have been prepared in accordance with the current edition of the RICS Code of Measuring Practice.

- Characterful & Charming Period Cottage
- Secluded & Private Road
- Potential to Extend on Both the Ground & Loft Area S.T.P.P.
- Three Bedrooms
- Modern Fitted Kitchen with Built in Appliances
- 976 Sq. ft of Living Space
- W/C Fitted 1st Floor Bathroom Suite / Separate W/C
- Newly Fitted Storage Heaters
- Double Glazed Windows
- Large Front and Rear Gardens
- Area For Off Street Parking
- EPC C (70)
- Sold With No Onward Chain