



5 ADVENT HOUSE 1 2 ISAAC WAY MANCHESTER, M4 7EP

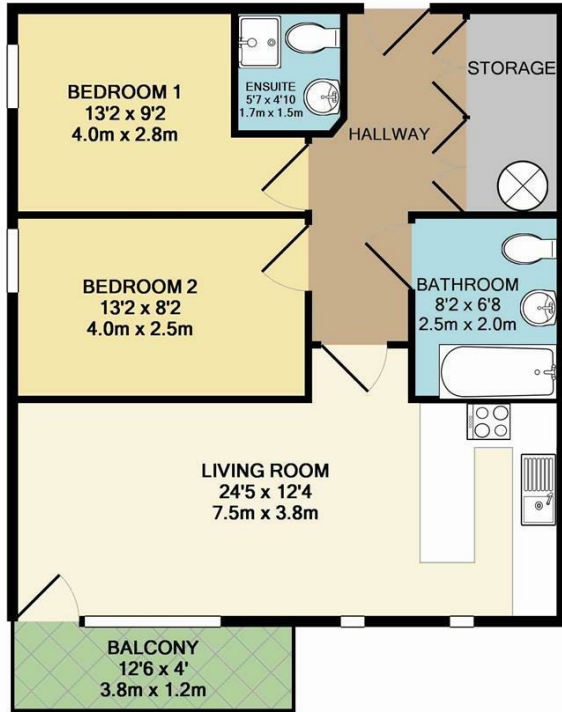
£185,000
LEASEHOLD

Welcome to Advent House, a modern apartment located at 1, 2 Pollard Street in the vibrant area of New Islington. This delightful property offers a comfortable living space of 666 square feet, making it an ideal choice for individuals or small families seeking a contemporary home.

The apartment features a spacious reception room, perfect for entertaining guests or enjoying a quiet evening in. With two well-proportioned bedrooms, there is ample space for relaxation and rest. The property also boasts two bathrooms, providing convenience and privacy for all residents.

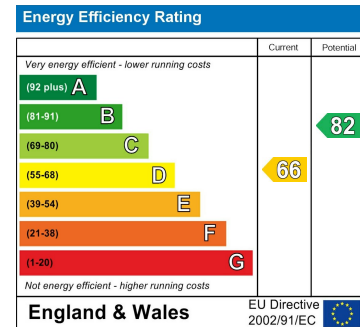
One of the standout features of this apartment is the availability of parking for one vehicle, a valuable asset in this bustling area. New Islington is known for its lively community and excellent amenities, including shops, restaurants, and parks, all within easy reach.

buckleyfrayne



TOTAL APPROX. FLOOR AREA 666 SQ.FT. (61.9 SQ.M.)

Whilst every attempt has been made to ensure the accuracy of the floor plan contained here, measurements of doors, windows, rooms and any other items are approximate and no responsibility is taken for any error, omission, or mis-statement. This plan is for illustrative purposes only and should be used as such by any prospective purchaser. The services, systems and appliances shown have not been tested and no guarantee as to their operability or efficiency can be given
 Made with Metropix ©2014



Agents Note: Whilst every care has been taken to prepare these particulars, they are for guidance purposes only. All measurements are approximate and are for general guidance purposes only and whilst every care has been taken to ensure their accuracy, they should not be relied upon and potential buyers/tenants are advised to recheck the measurements

Manchester Office Lettings
 6-14 Great Ancoats Street
 Northern Quarter
 Manchester
 M4 5AZ

0161 236 0004
 mark.buckley@buckleyfrayne.co.uk
 www.buckleyfrayne.co.uk

buckleyfrayne