

## 61 ANCHOR COURT

GRAYS, RM17 6QP

£260,000  
LEASEHOLD

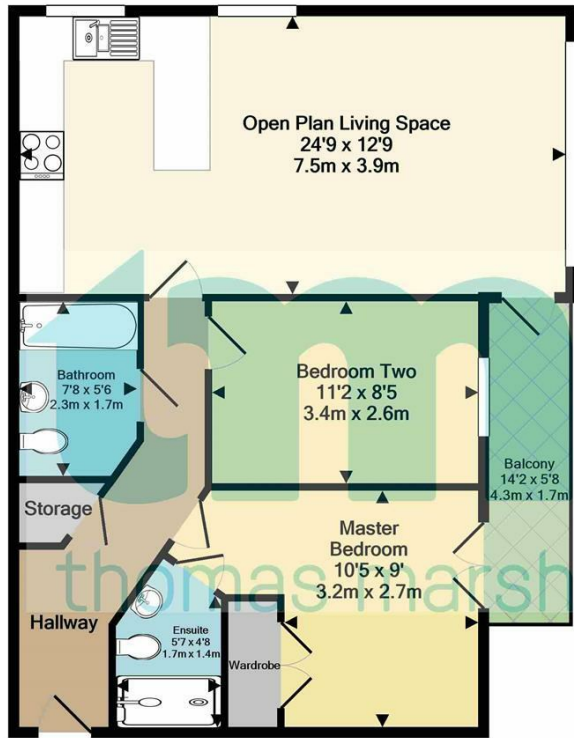
Guide Price £260,000 - £270,000 - This modern two-bedroom apartment in Grays sounds like a great opportunity! Here's a summary of the key features and details:

Location: Walking distance to Grays C2C Station and the town centre.

\* Development: Situated within a gated community, providing added security.

\* Living Space: Generous living accommodation with a spacious lounge/kitchen area.

**tm**  
thomas marsh



Whilst every attempt has been made to ensure the accuracy of the floor plan contained here, measurements of doors, windows, rooms and any other items are approximate and no responsibility is taken for any error, omission, or mis-statement. This plan is for illustrative purposes only and should be used as such by any prospective purchaser. The services, systems and appliances shown have not been tested and no guarantee as to their operability or efficiency can be given  
 Made with Metropix ©2020



| Energy Efficiency Rating                    |  | Current                 | Potential |
|---|--|-------------------------|-----------|
| Very energy efficient - lower running costs |  |                         |           |
| (92 plus) A                                 |  |                         |           |
| (81-91) B                                   |  |                         |           |
| (69-80) C                                   |  | 73                      | 74        |
| (55-68) D                                   |  |                         |           |
| (39-54) E                                   |  |                         |           |
| (21-38) F                                   |  |                         |           |
| (1-20) G                                    |  |                         |           |
| Not energy efficient - higher running costs |  |                         |           |
| England & Wales                             |  | EU Directive 2002/91/EC |           |

Agents Note: Whilst every care has been taken to prepare these particulars, they are for guidance purposes only. All measurements are approximate and are for general guidance purposes only and whilst every care has been taken to ensure their accuracy, they should not be relied upon and potential buyers/tenants are advised to recheck the measurements

Grays Lettings  
 47 Orsett Road  
 Grays  
 Essex  
 RM17 5HJ

01375 370779  
 lettings@thomas-marsh.com  
 www.thomas-marsh.com

