



## 57 HATHAWAY ROAD

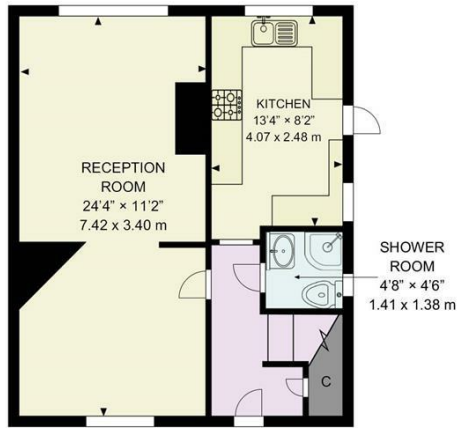
GRAYS, RM17 5LB

£350,000  
FREEHOLD

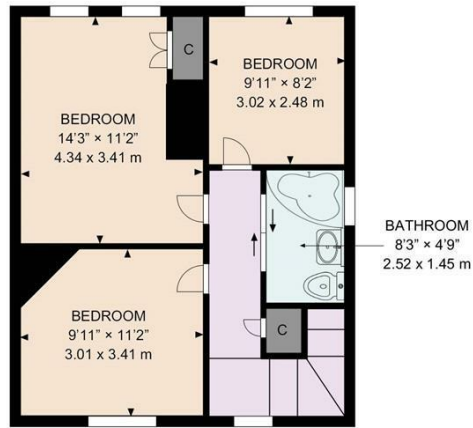
Introducing to the market: a bright and spacious semi-detached 3-bedroom, 2-bathroom home on highly sought-after Hathaway Road — offered with NO ONWARD CHAIN.

This is the house that becomes a home, whether for your family or a savvy buy-to-let. Hathaway Road is exceptionally well located: just a short stroll to Orsett Road, the high street, the c2c station, schools, and a wide range of everyday amenities. You're tucked far enough back to enjoy a quiet, residential feel, yet close enough to everything for effortless convenience.

**tm**  
thomas marsh



Ground Floor



First Floor

**HATHAWAY ROAD GRAYS RM17**

The plan is intended solely as a layout guide, and no liability is taken for any errors, omissions, or misstatement. It does not constitute in whole or in part, an offer or contract. Any intending purchaser or lessee should satisfy themselves, through inspection searches, enquiries, and a full survey, as to the accuracy of the information provided. All areas, measurements shapes, compass bearing, position and distances are approximate. No guarantee is provided regarding the total area. Not to scale.

© airvideography.com. Unauthorised reproduction prohibited.

- Restricted head height below 1.5m / 5'0"



Energy Efficiency Rating		Current	Potential
Very energy efficient - lower running costs			
(92 plus) <b>A</b>			
(81-91) <b>B</b>			
(69-80) <b>C</b>			<b>79</b>
(55-68) <b>D</b>	<b>62</b>		
(39-54) <b>E</b>			
(21-38) <b>F</b>			
(1-20) <b>G</b>			
Not energy efficient - higher running costs			
<b>England &amp; Wales</b>		EU Directive 2002/91/EC	

Agents Note: Whilst every care has been taken to prepare these particulars, they are for guidance purposes only. All measurements are approximate and are for general guidance purposes only and whilst every care has been taken to ensure their accuracy, they should not be relied upon and potential buyers/tenants are advised to recheck the measurements

Grays Lettings  
47 Orsett Road  
Grays  
Essex  
RM17 5HJ

01375 370779  
lettings@thomas-marsh.com  
www.thomas-marsh.com

