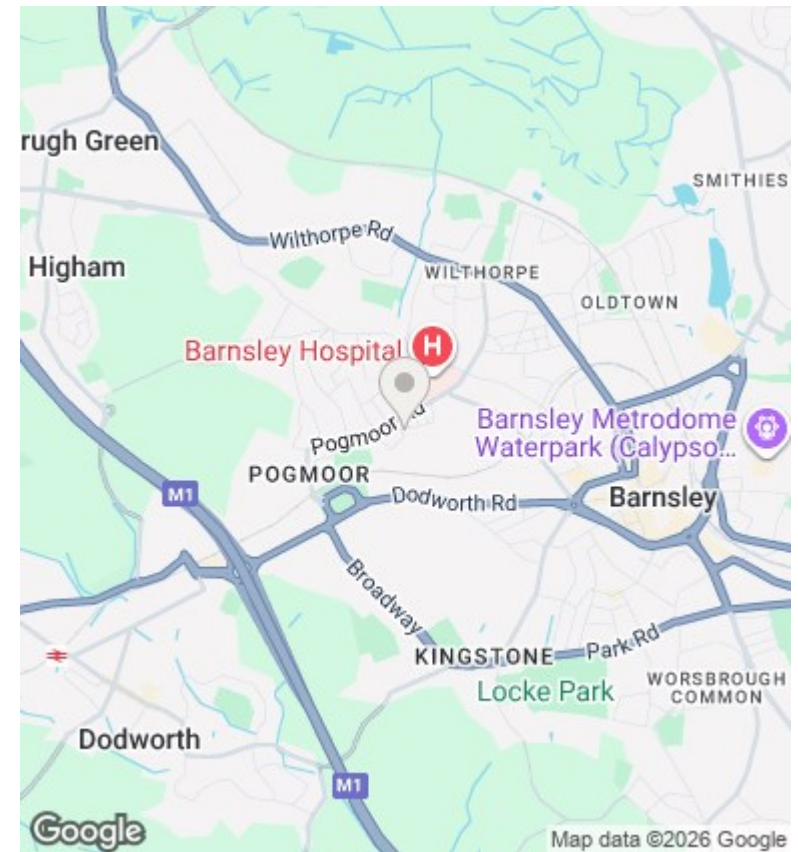
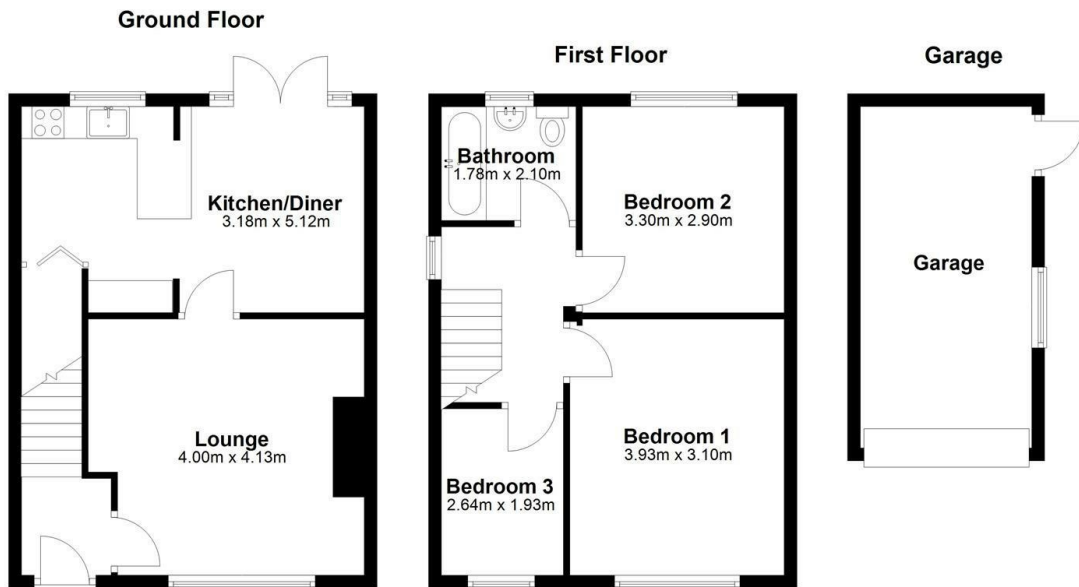




66 Winter Road, Pogmoor, Barnsley, S75 2EL

£950 PCM

- THREE BEDROOMS
- ENCLOSED REAR GARDEN
- UPVC DOUBLE GLAZING
- PARKING FOR 2 CARS
- WELL PRESENTED
- DETACHED GARAGE
- GAS CENTRAL HEATING



Directions

Viewings

Viewings by arrangement only. Call 01226 103103 to make an appointment.

Council Tax Band

A

EPC Rating:

D

