



WOODSTOCK GROVE W12





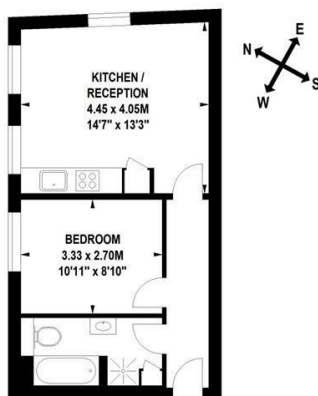
• **LARGE CONTEMPORARY FLAT** • **1 DOUBLE**

BEDROOM • KITCHEN • BATHROOM • FURNISHED • EXCELLENT TRANSPORT LINKS • AVAILABLE AUGUST 11TH • MOMENTS FROM WESTFIELD WHITE CITY • NO PARKING PERMITS ALLOCATED FOR THIS BUILDING

A large 1 bedroom flat with a modern kitchen and bathroom. Ideal for the Central Line at Shepherds Bush. Short walk to Westfield White City and Kensington Olympia. No parking permits allocated for this building. Furnished. Available August 11th. Council Tax Band D.

Woodstock Grove, W12

Approximate Gross Internal Area 38 sq m / 409 sq ft



First Floor

Floor Plan produced for Finlay Brewer by Mays Floorplans © . Tel 020 3397 4594
Illustration for identification purposes only, not to scale
All measurements are maximum, and include wardrobes and window bays where applicable
This Floorplan has been prepared in accordance with the current edition of the RICS code of measuring practice.

138 Shepherds Bush Road, London, W6 7PB
Tel: 020 7371 4071 lettings@finlaybrewer.co.uk