



Hammersmith Grove W6



Hammersmith Grove W6

GEORGIAN VILLA

6 BEDROOMS

APX. 4000 SQ FT

**2 FLOORS OF LIVING/ENTERTAINING
SPACE**

80 FT GARDEN

OFF-STREET PARKING

CLOSE TO TRANSPORT

UNFURNISHED / FLEXIBLE MOVE DATE

SEPARATE STUDIO FLAT

COUNCIL TAX BAND H & EPC E

An impressive semi-detached late Georgian villa-style house with 2 sensational floors of lateral living/entertaining space and 6/7 bedrooms. There is also a fantastic 80 foot westerly garden and off-street parking for 2-3 cars. The extra-wide contemporary kitchen/dining/family room is open from front to back and has crittal doors out to the fabulous garden. There is also a utility and cloakroom on this floor. The first floor has a truly wonderful high-ceilinged double reception with original features, 2 feature fireplaces and intricate cornicing. There is also a generous study to the rear of this floor overlooking the garden. There are 6 bedrooms and 3 bathrooms on the upper floors. Ideally located for the Hammersmith transport hubs, schools, river, Ravenscourt Park and easy access to the West End and to the west out of town. The property also benefits from a separate studio flat which is perfect for guests or a live in nanny. Flexible move date. Council tax band H.

£2,717 PER WEEK

SUBJECT TO CONTRACT



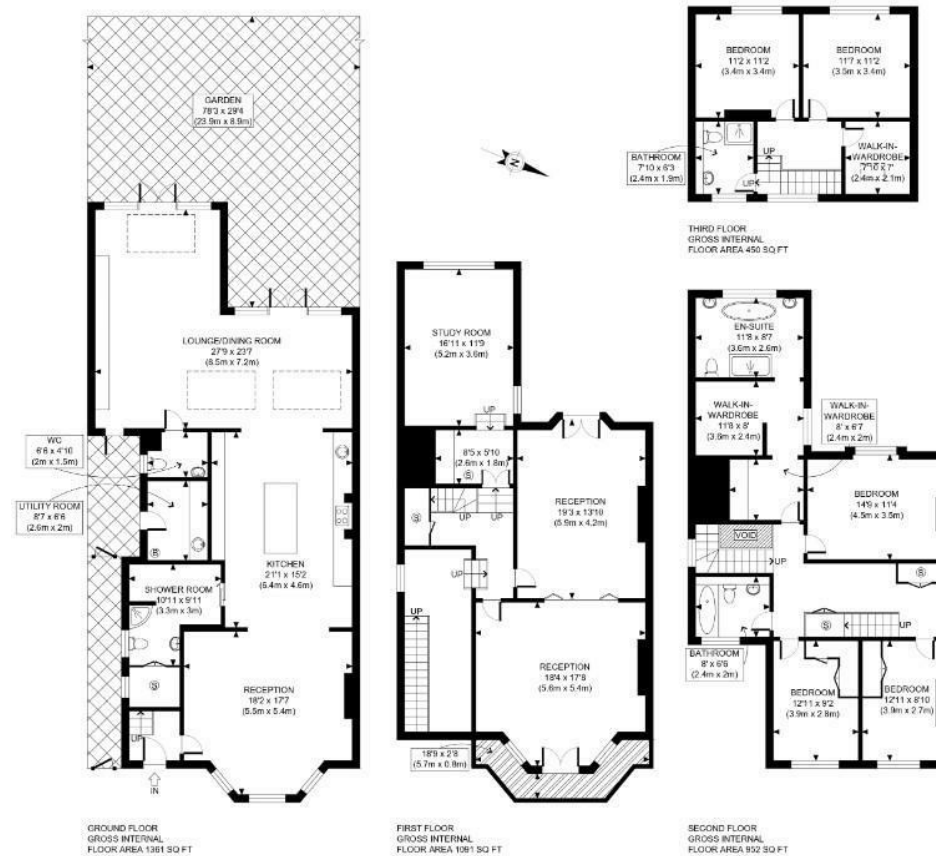








HAMMERSMITH GROVE, W6



APPROX. GROSS INTERNAL FLOOR AREA: 3854 SQ FT/ 358 SQM

PROPERTY PHOTO PLANS.CO.UK
ONE STOP SHOP FOR PROPERTY MARKETING

This plan is for illustrative purposes only and should be used as such by any prospective client. Whilst every attempt has been made to ensure the accuracy of the Floor Plan contained here, measurements of the doors, windows, rooms and any other items are approximate and no responsibility is taken for any errors, omissions, or misstatement. The services, systems and appliances shown have not been tested and no guarantee as to the operability or efficiency can be given.