



Becklow Road W12





# Becklow Road W12

**TERRACED HOUSE**

**3 BEDROOMS**

**DOUBLE RECEPTION ROOM WITH WOOD FLOORING**

**SPACIOUS KITCHEN**

**SOUTHERLY GARDEN**

**COUNCIL TAX BAND F**

**DOWNSTAIRS WC AND STORAGE SPACE**

**AVAILABLE NOW**

---

A lovely 3 bedroom house with a double reception which has painted wood flooring that flows through to the full width kitchen/breakfast room to the rear where there is ample space for a dining table. Glass concertina doors open to the southerly garden which is paved and lawned. There is a guest cloakroom off the hallway and storage space. The first floor half landing has a bedroom to the rear and the family bathroom. Off the main landing to the front is the principal bedroom with second double bedroom behind. Available now. Council Tax Band F.

---

**£726 PER WEEK**

**SUBJECT TO CONTRACT**



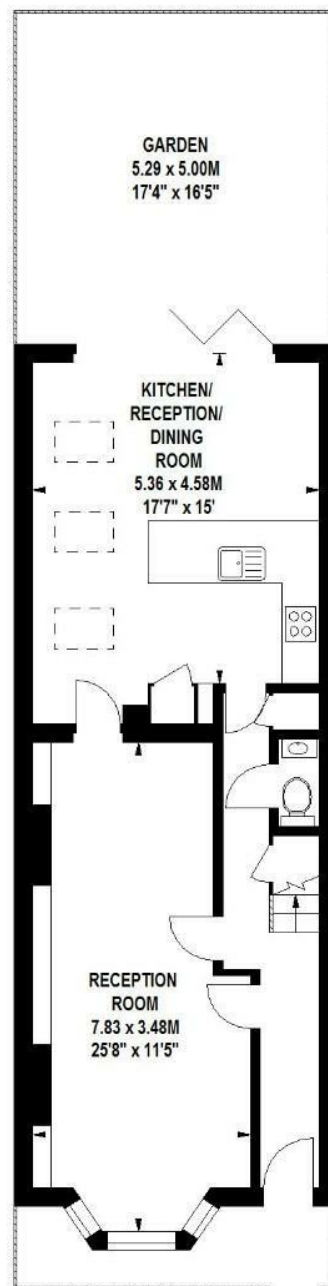












## Becklow Road, W12

Approximate gross internal area  
113 sq m / 1216 sq ft

