



Westwick Gardens W14



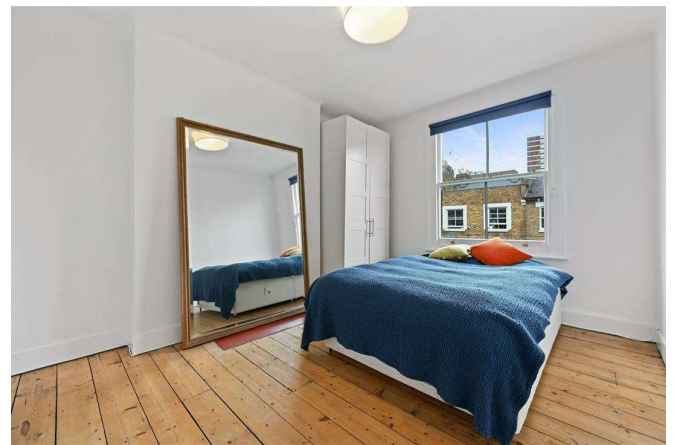
Westwick Gardens W14

5 BEDROOMS
DOUBLE RECEPTION
KITCHEN/RECEPTION/DINING ROOM
3 BATHROOMS
GUEST CLOAKROOM
STUDY & UTILITY ROOM
DECKED ROOF TERRACE
PAVED & WALLED GARDEN
EPC RATING C 69
COUNCIL TAX BAND G

A fabulous 5 bedroom Victorian terraced house with excellent living/entertaining space over 2 floors, a paved and walled garden and a decked roof terrace. The elegant, high-ceilinged double reception is on the raised ground floor with a bay window to the front, feature fireplace, wood floor and large sash window to the rear overlooking the garden. There is a study to the rear of this floor. The lower ground floor has been opened up from front to back to create a wonderful kitchen/reception/dining room with wood floor throughout. The kitchen is to the front with bay window and central island whilst the reception/dining area is to the rear with full width folding glass doors which open onto the paved southerly garden. There is also a utility room, under stairs storage and a separate entrance on this level. There are 5 bedrooms, a guest cloakroom and 3 contemporary bathrooms (2 of which have just been renewed) on the upper floors including the wonderful principal bedroom suite with walk-in dressing room and separate bathroom with shower cubicle. In addition the large top floor bedroom has French doors and windows which open onto a decked roof terrace with far-reaching views. The property is exceptionally well placed for some of West London's most highly regarded schools, notably Addison Primary School, Ecole Française Jacques Prévert and St Paul's Girls' School. This substantial family house of apx 2,702 sq ft is well configured and provides fantastic flexible living/entertaining space. It is ideally located for the restaurant and leisure facilities of Westfield London, the transport hub at Shepherds Bush Green and the exciting new London Olympia development with its variety of theatre, cultural and restaurant options. A must see!

PRICE GUIDE £2,500,000
FREEHOLD
SUBJECT TO CONTRACT







Westwick Gardens, W14
 Approximate Gross Internal Area 251 sq m / 2702 sq ft



Floor Plan produced for Finlay Brewer by Mays Floorplans © Tel 020 3397 4594
 Illustration for identification purposes only, not to scale.
 All measurements are maximum, and include wardrobes and window bays where applicable.
 This Floorplan has been prepared in accordance with the current edition of the RICS code of measuring practice.